

WED 21 OCT 2020
8:00 AM - 3:00 PM

Early Career Development Course

The Early Career Development Course is a perennial favorite at ACRM that connects early career rehabilitation researchers with prominent and accomplished professionals. The course will provide opportunities to learn from experts in interdisciplinary team science, government agency representatives, and distinguished scientists who will provide insights through didactic presentations, panel discussions, small group discussions, and one-on-one networking.



The program will include presentations from representatives of major federal agencies discussing new rules and regulations as well as updates on early career opportunities. Officials from NIH, NIDLIRR, VA, and the CDC will be available to give grantsmanship advice based on each organization's mission and funding priorities.

The Emerging Scholars Panel Session will feature early career research professionals who will share their experiences and insights about grant writing and successful implementation of research goals.

**the best advice you've
not yet heard...**

A renowned keynote speaker, **Dr. Theresa Bender Pape**, with an outstanding reputation in the field of rehabilitation will share her work as well as key elements in professional development in keeping with the course theme.



Seats are limited, register early.
MORE: [ACRM.org/ecdc](https://www.acrm.org/ecdc)

This course is a ticketed event with separate registration. This ticket is included in the **WORLD PASS** for incredible value. See *page 19*



ALL-STAR FACULTY LINE-UP

PRESENTERS

AMY HERROLD, PhD, Research Health Scientist, Edward Hines Jr., VA Hospital

<<< **KEYNOTE SPEAKER: THERESA BENDER PAPE, DR.PH, MA**, CCC-SLP/L, Neuroscientist, Edward Hines Jr. VAH and Northwestern Feinberg School of Medicine

MONIQUE R. PAPPADIS, MEd, PhD, Assistant Professor, University of Texas Medical Branch

REZA EHSANIAN, MD PhD, PGY2 Resident, Div. of Physical Medicine & Rehab., Dept. Neurosurgery, Univ. of New Mexico School of Med.

RALPH NITKIN, PhD, Health Scientist Administrator, National Center for Medical Rehabilitation Research, NICHD, NIH

BRIAN DOWNER, PhD, Assist. Prof., Univ. of Texas Medical Branch

>>> **ALISON COGAN**, PhD, OTR/L, Polytrauma/TBI Advanced Fellow, Washington DC VA Medical Center

MARK LYLE, PT, PhD, Assistant Professor, Emory University School of Medicine, Division of Physical Therapy

MAYA E. O'NEIL, PhD, Neuropsychologist/Associate Professor, VA Portland Health Care System/Oregon Health & Science University

LYNN A. WOROBEY, PhD, DPT, ATP, Assist. Professor, University of Pittsburgh

CATHERINE SIENGSUKON, PT, PhD, Associate Professor, University of Kansas Medical Center

PRESENTING AUTHORS

ALEXIS PETERSON, PhD, Health Scientist, National Center for Injury Prevention and Control-CDC

SHANNON B. JUENGST, PhD, CRC, Assistant Professor, University of Texas Southwestern Medical Center

PANELISTS

PATRICIA DORN, PhD, Director, Rehabilitation Research and Development Service, Department of Veterans Affairs

A. CATE MILLER, PhD, Rehabilitation Program Specialist, National Institute on Disability, Ind. Living & Rehab. Research (NIDLIRR)

DEBORAH BACKUS, PT, PhD, FACRM, Director MS Research, Shepherd Center

GUY BUCKLE, MD, MPH, Director, Neuroimaging Research, Shepherd Center

SAMIR BELAGAJE, MD, Associate Professor, Neurology and Rehabilitation Medicine, Emory University School of Medicine

BROOKS C. WINGO, PhD, Associate Professor, Department of Occupational Therapy

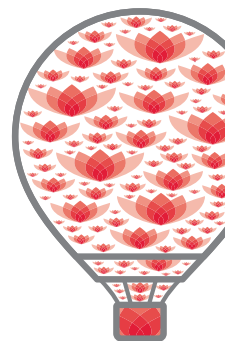
MODERATORS

STEPHANIE KOLAKOWSKY-HAYNER, PhD, Associate Professor, Mt. Sinai Icahn School of Medicine

FOFI CONSTANTINIDOU, PhD, CCC-SLP, FACRM, Director/Professor, University of Cyprus

>>> **connect with
all of these
seasoned
professionals**

**meet
your
new
mentors
here**



**career
lifting
experience**