



INTERVIEWS with course mentor & student alumni



MENTOR ALUMNI

Steve Page, OTR/L, PhD, MS, MOT, FAHA, FACRM, FAOTA, Associate Professor, Ohio State University Medical Center

WHAT DID YOU ENJOY MOST ABOUT PARTICIPATING IN THE ACRM ECDC?

I have been actively involved with ACRM since 1999, during my own postdoctoral fellowship. I have enjoyed the opportunity to connect and advise people who are in the same position that I was — seeking connections and opportunities that will advance their careers and the field.

THE ECDC IS PRIMARILY GEARED TOWARDS:

Pre-doctoral students; Post-doctoral fellows; Clinicians; Residents or Medical Fellows; Junior Faculty or Clinician Scientists

PLEASE TELL US WHAT YOU DO AND WHAT YOUR WORK TYPICALLY ENTAILS

My team's mission is to improve stroke survivor function and stroke care delivery.

Consistently, we've developed many "firsts" in neurorehabilitation, including novel approaches used internationally (e.g., functional brain stimulation, modified constraint induced therapy; mental practice) and novel clinical pathways, clinician manuals and evidence bases supporting others' approaches (e.g., the Bioness H200). We also established the clinically important difference metrics for oft-used rehabilitative measures (e.g., the Fugl Meyer; the Arm Motor Ability Test), and showed that some measures (e.g., the NIH Stroke Scale) are poor matches for post-acute contexts.

It is also extremely important to me to teach best practices to the next generation of clinicians, clinicians "in the trenches." Therefore, I teach in one of the country's (and my medical center's) best-ranked programs, I teach/mentor MD, PhD, and PT students and clinicians, and I host a variety of webinars. I also speak regularly at patient events.

I am happy to help mentor. [See more at ACRM.org/ecdc](http://www.acrm.org/ecdc)



STUDENT ALUMNI

Brad Kurowski, Associate Professor, Cincinnati Children's and University of Cincinnati COM

THE BEST PART OF THE EARLY CAREER DEVELOPMENT COURSE (ECDC) WAS... Networking.

WHAT'S SOMETHING THAT YOU APPROACHED DIFFERENTLY BECAUSE OF WHAT YOU LEARNED DURING THE ECDC?

Building teams and approaching questions as an interdisciplinary team.

HOW HAS THE ECDC HELPED YOUR CAREER?

Created new connections and opportunities.

THE ACRM EARLY CAREER COMMUNITY IS...

Supportive.

THE ECDC IS PRIMARILY GEARED TOWARDS...

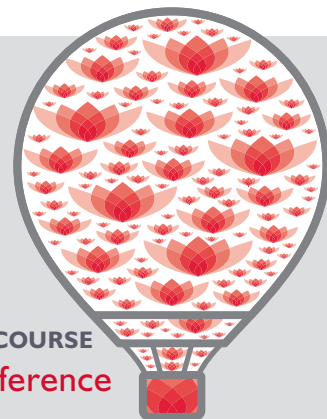
Post-doctoral fellows; Junior Faculty or Clinician Scientists.

PLEASE TELL US WHAT YOU DO AND WHAT YOUR WORK TYPICALLY ENTAILS

Clinical and translational research.

...the best advice
you've not yet heard.
Don't miss this career
lifting experience

EARLY CAREER DEVELOPMENT COURSE
ACRM  Annual Conference



Make your own great story. Turbo-charge
your career here.

SEE DETAILS, AGENDA & REGISTER:
www.acrm.org/ecdc

