



# BRING RESEARCH TO PRACTICE

## FASTER

**ACRM**   
98<sup>th</sup> Annual  
Conference

**PROGRESS IN  
REHABILITATION  
RESEARCH**

TRANSLATION  
TO CLINICAL  
PRACTICE

**ARCHIVES OF PM&R**

**BRAIN INJURY**

**MILITARY / VETERANS AFFAIRS**

**STROKE**

**PAIN REHABILITATION**

**PEDIATRIC REHABILITATION**

**TECHNOLOGY**

**SPINAL CORD INJURY**

**CANCER REHABILITATION**

**HEALTH SERVICES RESEARCH**

**MEASUREMENT**

**CAREER DEVELOPMENT**

**NEUROPLASTICITY**

**NEURODEGENERATIVE DISEASES**

**AGING RESEARCH & GERIATRIC REHABILITATION**

**COMPLEMENTARY INTEGRATIVE REHABILITATION MEDICINE**

**INTERNATIONAL**

**ATHLETE DEVELOPMENT & SPORTS REHABILITATION**

**ARTS & NEUROSCIENCE**

**LIFESTYLE MEDICINE**

**PHYSICIANS & CLINICIANS**

**REHABILITATION TREATMENT SPECIFICATION**

**ACRM 100 YEARS SINCE 1923**

**ARCHIVES of Physical Medicine and Rehabilitation**

**ARCHIVES of Rehabilitation Research & Clinical Translation**

**OPEN ACCESS**

**ACRM AMERICAN CONGRESS OF REHABILITATION MEDICINE**

**SAVE UP TO 50% OFF BEFORE EARLY BIRD RATES END**

**Pre-Conference Instructional Courses >> PAGE 15**

# welcome



## HOME TO ACRM



*Pamela Roberts*

**PAMELA ROBERTS,**  
PhD, OTR/L, SCFES,  
FAOTA, CPHQ, FNAP,  
FACRM

ACRM PRESIDENT  
Executive Director and  
Professor, Physical Medicine  
and Rehabilitation, Executive  
Director Office of the  
Chief Medical Officer, and  
Co-Director Division of  
Informatics, Cedars-Sinai

### **Our work has never mattered more than it does right now.**

During these rapidly changing times, our goal at ACRM remains your professional home and source of inter-professional inspiration, education, community, and networking.

ACRM has made all of this easier than ever. The **98th Annual ACRM Conference** will be held VIRTUALLY **24 – 29 September 2021** with a robust program. From the comfort and convenience of your home or office, participate in the world's largest interdisciplinary rehabilitation research event.

### **ADVANTAGES of ACRM VIRTUAL**

In addition to the real-time event in September, ACRM increases the value by providing access to 400+ hours of the recorded content for six months after the event and the ability to continue to earn CME/CEUs. This is a tremendous value.

At ACRM, we are about the research, with the goal of bringing that research — the very best and latest science into practice — *faster*. **The best way to do that is by coming together and gathering around the research at the ACRM Annual Conference.**

We are honored to have presenters of the highest caliber at ACRM. The four major **PLENARY SESSIONS** anchor each day of the Core Conference. And this year, these will be live-streamed: Plenary I: **Kerri Morgan**, Plenary II: **Claire Kalpakjian**, Plenary III: **Sylk Sotto**, Plenary IV and ACRM Coulter Award winner: **Claudia H. Kawas** (see page 10).

LIKE & SHARE ACRM      #ACRM2021 @ACRMtweets @ACRMconference

# All about the research & the community

I N T E R D I S C I P L I N A R Y

## MORE THIS YEAR

ACRM is always improving. And this year, we are excited about having more networking capabilities — including a new “Matchmaking” feature built into the platform. Also on tap, there will be MORE opportunities for LIVE interaction with presenters, MORE ways to connect with each other, earlier access to pre-recorded content and even MORE Closed-captioning features.

## WITH GRATITUDE

None of this would be possible without the fantastic work of the ACRM Program Committee led by **Megan Mitchell** and **Jeanne Zanca** and the outstanding work from hundreds of presenters.

This event is made financially possible due to the support of our sponsors, exhibitors, advertisers and Institutional Supporters (back cover). Please visit them in the Online Program (ACRM.org/op).

## YOU MATTER at ACRM

No matter where you are or who you are; no matter where you work, no matter your job status, career level, race, nationality, geography, ethnicity, age, nor your political affiliation — you can rest assured that you are welcome and WANTED at ACRM.

To this point, the ACRM Diversity, Equity & Inclusion has done an amazing job and their efforts will be seen at the Conference.

## REGISTER TODAY

If you haven't already, please register now to secure your spot. The 6-Day WORLD PASS is the best value if you'd like to attend a Pre-Conference course — especially the highly-regarded Early Career or Leadership Development Course.

*We look forward to seeing you virtually in September!*

## REGISTER NOW

Save up to 50%  
before early bird  
rates end soon

[ACRM.org/register](https://www.acrm.org/register)



#ACRM2021

Although significant schedule changes are not anticipated, schedules, sessions and presenters and details are subject to change. Please excuse typos. For the latest, please refer to the searchable online program: [ACRM.org/op](https://www.acrm.org/op).



# Largest interdisciplinary rehabilitation research event in the world

## AT-A-GLANCE

FRI 24 SEPT		SAT 25 SEPT		SUN 26 SEPT	
PRE-CONFERENCE				CORE	
PROGRAMMING BEGINS 10:00 AM ET					
Instructional Courses Pre-Recorded Content + Live Video Discussion	Instructional Courses Pre-Recorded Content + Live Video Discussion	<b>Early Career Development Course</b> — including joint sessions with the Leadership Development Course >  <a href="http://ACRM.org/ecdc">ACRM.org/ecdc</a>	<b>Leadership Development Course</b> — including joint sessions with the Early Career Development < Course  <a href="http://ACRM.org/ldc">ACRM.org/ldc</a>	Instructional Courses Pre-Recorded Content + Live Video Discussion <i>Select from 12+ of 4-hour courses</i> <a href="http://ACRM.org/ic">ACRM.org/ic</a>	10:00 AM ET ACRM Community Group Meetings (Block 1) ACRM Community Group Meetings (Block 2) ACRM Community Group Meetings (Block 3) ACRM Community Group Meetings (Block 4)
<b>PRE-CONFERENCE INSTRUCTIONAL COURSES</b> <i>Select from half- and full-day courses. Wide variety of topics</i> <a href="http://ACRM.org/precon">ACRM.org/precon</a>		<b>ON-DEMAND ACRM COGNITIVE REHABILITATION TRAINING</b> Learn & earn 12 CME/CEUs right now. Then join us for... LIVE Q&A w/Faculty <a href="http://ACRM.org/cog2021">ACRM.org/cog2021</a>		<b>CONCURRENT SESSIONS BLOCK I</b>	
Access live-streaming, 100s of CME/CEUs, tradeshow, networking, the welcoming ACRM community & more.		This course is Included in <b>WORLD PASS</b> <i>Limited space</i>	This course is Included in <b>WORLD PASS</b> <i>Limited space</i>	<b>CONCURRENT SESSIONS BLOCK 2</b>	
<b>REGISTER &gt;&gt;&gt;</b>		<b>PLENARY I</b> (with Live Video Discussion) <b>KERRI A. MORGAN</b>		<b>LAUNCHPAD</b> <a href="http://ACRM.org/lp">ACRM.org/lp</a>	
<b>ACRM e-POSTER VIEWING</b>		<b>Exhibitor Video Chats</b>		<b>First-Time &amp; Early Career Attendee Welcome</b> OPEN to ALL	
				<b>Virtual Networking Opportunities</b>	
<b>ACRM Community Group Meetings (Block 5)</b>					

- Pre-Conference Instructional Courses & Workshops; Combination of Pre-Recorded Content + Live Video Discussion
- LIVE Video Session — with Live Video Discussion
- Pre-Recorded Content + Live Video Discussion
- Live Video Meeting or Reception
- Combination of Pre-Recorded Content + Live Video Discussions or Meetings
- VIRTUAL Exhibit Hall — Combination of Pre-Recorded Content + Live Video Discussions or Meetings
- ACRM e-Poster Viewing — Pre-Recorded Content (no live Video Component)



#ACRM2021

**PLEASE NOTE:** This infographic is preliminary (12 APRIL 2021), subject to change and is for representational purposes only — not meant for actual schedule planning. For the latest programming, times and details, please check the Searchable Online Program [ACRM.org/op](http://ACRM.org/op) and the Conference App [ACRM.org/app](http://ACRM.org/app).  
 Education sessions will be recorded and available for viewing for registered attendees through March 2022.  
 Meetings and Virtual Exhibit Hall will be held LIVE and will not be recorded (with some exceptions). Meetings will not be accessible post-conference.



Everyone is welcome at **ACRM** — all rehabilitation professionals, administrators, researchers, clinicians, people with disabilities, and caregivers.

Realize the benefits of early registration.

**REGISTER TODAY! Early Bird rates end soon**

MON 27 SEPT			TUE 28 SEPT		WED 29 SEPT	
<b>CORE CONFERENCE</b>						
8:30 AM ET Virtual Networking Opportunities			8:30 AM ET Virtual Networking Opportunities		9:00 AM ET ACRM Program Committee Meeting (by invitation only)	
Mindfulness Exercises presented by the ACRM CIRM Networking Group	9:30 AM ET ACRM Community Group Meetings (Block 6)		Mindfulness Exercises presented by the ACRM Complementary, Integrative, Rehabilitation Medicine (CIRM) Networking Group		Mindfulness Exercises presented by the ACRM Complementary, Integrative, Rehabilitation Medicine (CIRM) Networking Group	
Award Recognition <b>PLENARY II</b> (with Live Video Discussion) <b>CLAIRE KALPAKJIAN</b>			10:00 AM ET ACRM Community Group Meetings (Block 9)		10:00 AM ET ACRM Community Group Meetings (Block 12)	
CONCURRENT SESSIONS BLOCK 3			CONCURRENT SESSIONS BLOCK 4		Award Recognition <b>PLENARY IV</b> (with Live Video Discussion) <b>CLAUDIA H. KAWAS</b>	
CONCURRENT SESSIONS Live Video Discussions	Sponsored Learning Center		CONCURRENT SESSIONS BLOCK 5		CONCURRENT SESSIONS BLOCK 6	
Annual Membership Meeting <b>OPEN to ALL</b>			CONCURRENT SESSIONS Live Video Discussions		CONCURRENT SESSIONS BLOCK 7	
<b>FEATURED SESSIONS</b> (with Live Video Discussion) 1) Federal & PCORI Funding and 2) Mind-Body Medicine: The Central Park Jogger's Healing to Wholeness			Award Recognition <b>PLENARY III</b> (with Live Video Discussion) <b>SYLK SOTTO</b>		CONCURRENT SESSIONS BLOCK 7	
Oral Presentations	ACRM BRAIN INJURY-ISIG SUMMIT		Oral Presentations		CONCURRENT SESSIONS Live Video Discussions	
ACRM Community Group Meetings (Block 7)			ACRM Community Group Meetings (Block 10)		CONCURRENT SESSIONS Live Video Discussions	
Virtual Networking Opportunities			Meet the Editors of the ACRM Journals		<b>CORE END 4:00 PM ET</b>	
ACRM Community Group Meetings (Block 8)			Henry B. Betts Awards Gala			
ACRM Community Group Meetings (Block 8)			ACRM Community Group Meetings (Block 11)			

Subject to change. As of 12April2021

\*BI-ISIG = Brain Injury Interdisciplinary Special Interest Group. See all ACRM Community Groups: [ACRM.org/communities](https://www.acrm.org/communities)

\*\*Task Force meetings will occur during the scheduled Community Group meetings. [ACRM.org/meetings21](https://www.acrm.org/meetings21)

All registered conference attendees are welcome and encouraged to join all Meet & Greet Community Group Meetings.

**PLEASE NOTE:** All times refer to Eastern Standard Time (EST). Items are being added and improved as ACRM works hard to make the best VIRTUAL event imaginable. This infographic is for representational purposes only. Please check the ACRM Conference App and the Searchable Online Program [ACRM.org/op](https://www.acrm.org/op) for the latest programming and details.

MORE networking  
MORE social interaction



# 400+ hours of RECORDED CONTENT through MARCH 2022

## WHAT was loved is returning:

- **6 days** of the LATEST RESEARCH translated to practice
  - **3.5 days** CORE conference
  - **2.5 days** PRE-conference instructional courses
- NONSTOP CONTENT for **22** focus areas
  - **300+** educational sessions, symposia & lectures
  - **600+** Scientific papers & poster presentations
- High-end VIRTUAL platform
  - Accessible from anywhere in the world
  - At your own pace
  - Access **100s** of hours of content for 6 months after the event
  - **Earn CME/CEUs through March 2022**
- **Dozens of LIVE** ACRM Community Group Meetings
- Powerhouse presenters — renowned names in rehab

## MORE this year:

- MORE networking capabilities with “Matchmaking” feature
- **MORE opportunities for LIVE interaction with presenters**
- MORE ways to connect with attendees
- MORE earlier access to pre-recorded content
- MORE Closed-captioning feature
- MORE Fun surprises

## THE ACRM ADVANTAGE

- » **Access 400+ hours of RECORDED CONTENT for 6 months after the event**
- » **Earn CME/CEUs through March 2022**
- » **400+ CME/CEUs**



# THE RESEARCH IS HERE



This is the world's largest interdisciplinary rehabilitation research conference. With fantastic growth and increasing interest each year, this is THE event for the science behind rehabilitation and the passionate, warm, and interprofessional community where ALL are welcomed. For maximum learning, CME/CEUs, value, networking & connecting — do not miss: [ACRM.org/2021](https://www.acrm.org/2021)

**Yours could be, too**

**Call for late-breaking Posters**

**Unlock your research with ACRM**

*Light up your career*

[ACRM.org/call](https://www.acrm.org/call)

## FOR THE WHOLE REHAB TEAM



## JOIN ACRM & SAVE

Save the most by becoming an ACRM Member before you register. ACRM is a vibrant interdisciplinary community offering outstanding opportunities to connect, learn and collaborate with colleagues from around the world. Members receive discounts to all ACRM events and gain full access to 22+ interdisciplinary special interest groups, committees, task forces and networking groups. Being a member of ACRM means you will receive the *ARCHIVES of Physical Medicine & Rehabilitation*, *ACRM eNews* (our weekly newsletter) and discounts on publication fees for *ARRCT*, our Open Access journal. Visit [ACRM.org/join](https://www.acrm.org/join) or contact [MemberServices@ACRM.org](mailto:MemberServices@ACRM.org).



# Powerhouse Presenters

& dozens more. See [ACRM.org/presenters](http://ACRM.org/presenters)



Plenary sessions with LIVE video discussions



## PLENARY I

26 SEPT 2021

### **“Driving the Future of Research: Linking Physical Activity to Health Outcomes for Persons using a Wheelchair”**

**KERRI MORGAN**, PhD, ORT/L,  
ATP, Assistant Professor of Occupational  
Therapy and Neurology, Washington  
University School of Medicine



CME/CEUS

*To date, our evidence base for physical activity specific to persons using a wheelchair is not conclusive, and wheelchair users still are not actively engaged in regular physical activity. I have experienced the barriers to accessing and participating in physical activity as a person with disability, a practicing occupational therapist, and a rehabilitation researcher. In my presentation, I will present my experiences from these three different perspectives. I'll touch on the challenges of becoming engaged in physical activity, experiencing health-related benefits once engaged, conducting research to create an evidence base, and obstacles to implementing evidence-based interventions and approaches. Further, I will discuss ideas of where our research needs to go and what it could look like when we are successful. — Kerri Morgan*

Kerri Morgan is actively involved in conducting research and mentoring health professional students. The focus of her clinical and research career has been to generate empirical knowledge helpful for guiding rehabilitation to improve the participation of persons with a mobility disability once they have been discharged from rehabilitation and are living in the community. Dr. Morgan is an avid wheelchair athlete and distinguished Paralympian. In 2009, she was the first woman to be selected to represent the US National Wheelchair Rugby team. She has competed in three Paralympic Games on the US Track and Field team that included Beijing in 2008, London in 2012, and Rio in 2016. She has won 4 Paralympic medals and 10 World Championship medals in distances ranging from 100m to 800m.

MORE: [ACRM.org/plenary1](http://ACRM.org/plenary1)

## PLENARY II

27 SEPT 2021

### **“The Learning Health System Model: The Practical & Moral Imperative for Embracing an Organizing Framework for Rehabilitation”**

**CLAIRE KALPAKJIAN**, PhD,  
MS, Associate Professor, Associate Chair for  
Research, University of Michigan



CME/CEUS

In 2007, the National Academy of Medicine formally introduced the concept of a Learning Health System (LHS), defined as a system in which “science, informatics, incentives, and culture are aligned for continuous improvement and innovation, with best practices seamlessly embedded in the delivery process and new knowledge captured as an integral by-product of the delivery experience.” Central to this framework is the enablement of health systems to learn from their practice by forming learning communities and powering learning cycles, harnessing data from every day practice to improve care and innovate.

This plenary will present a case for the practical and moral imperative for rehabilitation to embrace the LHS model as an organizing framework to capitalize on the strengths and value of rehabilitation by sharing work undertaken at the University of Michigan to transform the department of Physical Medicine and Rehabilitation into a LHS.

Claire Z. Kalpakjian is a biopsychosocial scientist with a clinical background in rehabilitation psychology and 30 years of experience serving diverse populations of persons with disabilities resulting from injury, illness, or by congenital causes. She is an expert in using mixed methods approaches to develop patient-reported outcome measures, particularly for patients with functional limitations. Her current research program focuses on reproductive health in women with physical disabilities to promote health equity, autonomy, and self-advocacy.

MORE: [ACRM.org/plenary2](http://ACRM.org/plenary2)



The ACRM Program Committee is proud to announce the first wave of confirmed presenters. More outstanding speakers will be announced as additional content is accepted and scheduled. This is just the “tip of the iceberg.” See the latest in the online program [ACRM.org/op](https://www.acrm.org/op)



## PLENARY III

28 SEPT 2021

### “Cultural Humility: A Foundation for Racial Equity in Academic Rehabilitation Medicine”

**SYLK SOTTO**, EdD, MBA, MPS,  
Assistant Professor of Medicine, Vice-chair  
for Faculty Affairs, Development, and  
Diversity, Department of Medicine, Indiana  
University School of Medicine



CME/CEUS

This presentation will focus on cultural humility as a framework for approaching rehabilitation medicine. It will draw consistently from socio-behavioral and educational research in making sense of academic medicine and vice-versa. In this sense, it is proposed that cultural humility should be the foundation of conversations. Tervalon and Murray-Garcia coined the term “cultural humility” in 1998 as a way to transcend “cultural competence.” It meant that those who embrace cultural humility incorporate a lifelong commitment to reflection, self-evaluation and self-critique; seeking to amend power imbalances and to develop mutually beneficial partnerships with communities. In academic medicine, prioritizing cultural humility leads to raised awareness and equity-based actions. Embracing such humility ensures curiosity and eliminates the desire to talk and behave like “experts.” Being humbled is to be vulnerable, at a loss for words and disconnected of all pride. So what if in order to develop the language, in order to start the conversation, we focus on cultural humility as the framework?

Dr. Sotto co-chairs her school’s Diversity Council; serves on numerous institutional committees; and teaches several courses, including research ethics, culturally relevant practices in medicine, and Foundations of Clinical Practice in the Spanish immersion program. Her scholarship and research centers on (in)equity in academic medicine. Her interests include faculty affairs and professional development; equity, inclusion and diversity; STEM/medical education; higher ed administration and leadership; and the intersection of health equity and research ethics.

MORE: [ACRM.org/plenary3](https://www.acrm.org/plenary3)

## PLENARY IV

29 SEPT 2021

### “The 90+ Study: What Did We Learn & What Happens When We All Live to 130 Years Old?”

**CLAUDIA H. KAWAS**, MD,  
Professor, Neurology,  
Neurobiology & Behavior,  
University of California, Irvine



CME/CEUS

Over the past century, advances in public health and medical science extended life expectancy by more than 28 years. People over age 90 are now the fastest growing segment of the population, although little is known about these pioneers of aging. Dr. Kawas will discuss findings from The 90+ Study, one of the largest population-based studies of oldest-old in the world. Based in Leisure World, Laguna Woods, California, she shares lifestyle and other lessons from individuals in their tenth decade and beyond.

Claudia Kawas is a geriatric neurologist and researcher in the areas of aging and dementia. Her work is concentrated on the epidemiology of aging and Alzheimer’s disease, determinants of successful aging, disability and frailty, clinical-pathological investigations, clinical trials, and most recently, a longitudinal study in cognitive and functional abilities of the Oldest-old.

Over the past 35 years, Dr. Kawas has published more than 200 peer-reviewed manuscripts and has worked on numerous longitudinal studies of aging and dementia, including the Bronx Aging Study, the Baltimore Longitudinal Study of Aging (NIA), and most recently, The 90+ Study, a population based sample of more than 2,000 people aged 90 years and older.

MORE: [ACRM.org/plenary4](https://www.acrm.org/plenary4)

REGISTER TODAY  
[ACRM.org/register](https://www.acrm.org/register)





# FEATURED SESSIONS

## FEDERAL & PCORI FUNDING OPPORTUNITIES & INITIATIVES FOR REHABILITATION

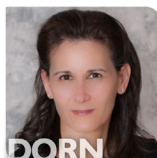
**PATRICIA A. DORN**, PhD Director, Rehabilitation Research and Development Service, Department of Veterans Affairs

**A. CATE MILLER**, PhD Rehabilitation Program Specialist, National Institute on Disability, Independent Living, and Rehabilitation Research (NIDILRR)

**THERESA HAYES CRUZ**, PhD Director, National Center for Medical Rehabilitation Research, Eunice Kennedy Shriver National Institute of Child Health and Human Development, National Institutes of Health

**CARLY PARRY, PHD**, MSW Senior Advisor, Patient-Centered Outcomes Research Institute (PCORI)

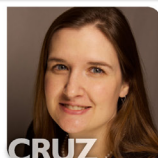
**CHRISTOPHER T. STEELE**, CDR Director, Military Operational Medicine Research Program, USARMY MEDCOM USAMRMC (USA)



DORN



MILLER



CRUZ



PARRY



STEELE

CME/CEUS

### FEATURED SESSION I



27 SEPT 2021

## MIND-BODY MEDICINE: THE CENTRAL PARK JOGGER'S HEALING TO WHOLENESS

**TRISHA E. MEILI, MA, MBA**  
Writer, Speaker, Advocate  
*I Am the Central Park Jogger: A Story of Hope and Possibility*  
Jacksonville, Florida



MEILI

CME/CEUS

### FEATURED SESSION II



27 SEPT 2021

## LEARN FROM THE FUNDING EXPERTS

LIVE Q&A

Join the leadership of the federal agencies and the Patient-Centered Outcomes Research Institute (PCORI) who fund rehabilitation research for an overview of their programs, funding opportunities, and special initiatives. Learn about resources that can support research initiatives in various conditions. Discover training opportunities, fellowship awards, and other resources to help young investigators begin their research career. Get an inside look at the collaborative efforts between the agencies and give your feedback on where additional collaboration can spur the science supporting rehabilitation medicine.

MORE: [ACRM.org/funding](https://www.acrm.org/funding)

## HEALING TO WHOLENESS

In April 1989, Trisha Meili went out for a run in New York City's Central Park and was savagely beaten, raped and left for dead. Doctors despaired for her life and a horrified nation cried out in pain and outrage. Fourteen years later, she revealed her amazing story of survival and recovery in her best selling memoir, "I AM THE CENTRAL PARK JOGGER: A Story of Hope and Possibility." The book is not a story of an attack, but rather, one of healing.

Trisha E. Meili will share how her journey of healing clearly linked the mind, body and spirit and taught her to look at healing in a new way. She will offer lessons that allowed her to move beyond being a victim, reclaim her life and become whole.

With her work, book and volunteer efforts, Trisha offers lessons on managing through unpredictable change, whether personal, professional economic or spiritual.

MORE: [ACRM.org/Meili](https://www.acrm.org/Meili) LIVE Q&A

See the latest information and details in the online program [ACRM.org/op](https://www.acrm.org/op)

# SPECIAL SYMPOSIA

See the online program for session dates, times and details: [ACRM.org/op](http://ACRM.org/op)

**SPECIAL SYMPOSIA**

**“Brain Mechanisms & Clinical Applications of Mindfulness Meditation for Neuroplasticity & Neurorehabilitation”**

**YIYUAN TANG**, PhD, Presidential Endowed Chair in Neuroscience, Professor of Psychological Sciences/Internal Medicine, Texas Tech University



**CME/CEUS**

[ACRM.org/Tang](http://ACRM.org/Tang)

**SPECIAL SYMPOSIA**

**“Living in a System that is Broken: Perspectives of the SCI Community on Research and Real Life”**

**KIM ANDERSON-ERISMAN**, PhD, Professor, Department of Physical Medicine and Rehabilitation, MetroHealth Medical Center, Case Western Reserve University School of Medicine



**CME/CEUS**

[ACRM.org/Anderson-Erisman](http://ACRM.org/Anderson-Erisman)

**SPECIAL SYMPOSIA**

**“Activity Based Neuroplastic Interventions in Pediatric Population With Spinal Cord Related Paralysis”**

**CRISTINA L. SADOWSKY**, MD, Clinical Director International Center for SCI, Kennedy Krieger Institute and Associate Professor Physical Medicine and Rehabilitation, Johns Hopkins School of Medicine



**CME/CEUS**

[ACRM.org/Sadowsky](http://ACRM.org/Sadowsky)

**BRUCKER SPECIAL SYMPOSIUM**

**“Technologies Applied to the Rehabilitation of People With SCI in Developing Countries: MEDULAPP, Rehabilitation Available to Everyone”**

**MELINA LONGONI**, MD, Physical Medicine and Rehabilitation, Hyperbaric Medicine Specialist, ReDel Rehabilitation Center and Director of Disability of the Municipality of Ituzingo



**CME/CEUS**

[ACRM.org/Longoni](http://ACRM.org/Longoni)

**SPECIAL SYMPOSIA**

**“Harnessing Human Technologies to Optimise the Development, Deployment & use of Rehabilitation Technology”**

**NICOLA KAYES**, PhD, MSc (Hons), BSc, Professor of Rehabilitation and Director, Centre for Person Centred Research, Auckland University of Technology



**CME/CEUS**

[ACRM.org/Kayes](http://ACRM.org/Kayes)

**SPECIAL SYMPOSIA**

**“Pediatric Traumatic Brain Injury: Implications for K-12 Students”**

**ANGELA H. CICCIA**, PhD, CCC-SLP, Associate Professor, Case Western Reserve University




**CME/CEUS**

[ACRM.org/Ciccia](http://ACRM.org/Ciccia)

**SPECIAL SYMPOSIA**

**“Exploring the Impacts of the COVID-19 Pandemic Mental Health and Suicide Risk in Veterans: Building an Evidence Base to Inform Pandemic Recovery”**

**Bryann DeBeer**, PhD, Rocky Mountain MIRECC for Suicide Prevention, Department of Veterans Affairs  
**Christopher A. Lowry**, PhD, University of Colorado Boulder  
**Amy A. Herrold**, PhD, Edward Hines Jr., VA Hospital



**CME/CEUS**

[ACRM.org/NPspecial](http://ACRM.org/NPspecial)

**SPECIAL SYMPOSIA**

**“Collaboration Makes Us Stronger: Alliances to Advance Stroke Recovery Research”**

**Julie Bernhardt**, PhD, Florey Institute of Neuroscience and Mental Health  
**Pamela Roberts**, PhD, MSHA, OTR/L, SCFES, FAOTA, CPHQ, FNAP, FACRM, Cedars-Sinai  
**Veronica T. Rowe**, MEd, PhD, OTR/L, CBIST, FNAP, Georgia State University




**CME/CEUS**

[ACRM.org/StrokeSpecial](http://ACRM.org/StrokeSpecial)

**SPECIAL SYMPOSIA**

**“Black Men Brain Health in the United States: From NFL Athlete to Old Age”**

**Robert W. Turner, II**, PhD, George Washington University School of Medicine and Health Sciences  
**Patricia C. Heyn**, PhD, FGSA, FACRM, University of Colorado Anschutz Medical Campus  
**Roland J. Thorpe, Jr.**, PhD, Johns Hopkins Center for Health Disparities Solutions



**CME/CEUS**

[ACRM.org/Turner](http://ACRM.org/Turner)

**SPECIAL SYMPOSIA**

**“Cognitive Training for Parkinson’s Disease During a Global Pandemic”**

**Hannes Devos**, PhD, University of Kansas Medical Center  
**Iracema Leroi**, MD, MRCPsych, FRCP, Global Brain Health Institute, Trinity College Dublin  
**Sandra L. Kletzel**, PhD, Edward Hines Jr., VA  
**Michele K. York**, PhD, ABPP-CN, FACRM, Baylor College of Medicine  
**Ekaterina Dobryakova**, PhD, Kessler Foundation



**CME/CEUS**

[ACRM.org/NDspecial](http://ACRM.org/NDspecial)

**SPECIAL SYMPOSIA**

**“5th Annual Women in Rehabilitation Science Symposium”**

**Flavia H. Santos**, PhD, Univ. College Dublin  
**Patricia C. Heyn**, PhD, FGSA, FACRM, University of Colorado Anschutz Medical Campus  
**Kelli W. Gary**, PhD, MPH, OTR/L, Dept. of Rehabilitation Counseling, VA Commonwealth Univ.  
**Monique R. Pappadis**, MEd, PhD, The University of Texas Medical Branch  
**Alison M. Cogan**, PhD, OTR/L, VA Greater Los Angeles Healthcare System  
**Deborah Backus**, PT, PhD, FACRM, Shepherd Center  
**Mark A. Hirsch**, PhD, FACRM, Carolinas Rehabilitation/Carolinas Medical Center



**CME/CEUS**

[ACRM.org/WomenInRehab](http://ACRM.org/WomenInRehab)

**COVID TRACK SPECIAL SYMPOSIUM**

**“COVID-19, Inflammation & Neuropsychiatric Function”**

**Jennifer Loftis**, PhD, VA Portland Health Care System and Oregon Health & Science University  
**C. Sue Carter**, PhD, Indiana University



**CME/CEUS**

[ACRM.org/Loftis](http://ACRM.org/Loftis)

**SPECIAL SYMPOSIA**

**“What Works for Those Who Want to Work? Addressing Employment Needs in Tandem with VA Healthcare”**

**Christina Dillahunt-Aspillaga**, PhD, CRC, CVE, CLCP, CBIST, CRS, University of South Florida; James A. Haley Hospital and Clinics  
**Shana Bakken**, PhD, CRC, Office of Mental Health and Suicide Prevention VA Central Office Veterans Health Administration  
**Deveny Ching**, MA, CRC, CBIST, James A. Haley, VA, Tampa; University of South Florida  
**Lisa Ottomanelli**, PhD, James A. Haley Veterans’ Hospital and Clinics



**CME/CEUS**

[ACRM.org/MVAspecial](http://ACRM.org/MVAspecial)

**Session & faculty details in Searchable Online Program**

[ACRM.org/op](http://ACRM.org/op)

**network >**  
**collaborate >**  
**connect > #ACRM2021**



[ACRM.org/op](http://ACRM.org/op)

**Surprise guests & new announcements**

**COMING SOON**

Join ACRM to receive eNews & the latest programming

[ACRM.org/join](http://ACRM.org/join)

See the latest information and details in the online program [ACRM.org/op](http://ACRM.org/op)

## Leadership Development Course

**SUN 26 SEPT 2021**  
10:00 AM - 5:00 PM ET



### **CULTURALLY COMPETENT LEADERSHIP IN REHABILITATION MEDICINE & RESEARCH**

This course begins with the keynote “Culturally Competent Leadership in Rehabilitation Medicine and Research” by Sylk Sotto, EdD.

The rest of the day will consist of workshops, roundtables, breakouts and panel discussions — all held live and interactive. Topics will include valuing individuals, inspiring teams, fostering inclusive environments, building resilience, team-building, becoming a leader, resilience in leadership, facilitating a culture of wellness, evidence-based interventions for leadership and staff, mentee-mentor relationships and strategies from four past ACRM presidents.



The keynote session speaker, **Sylk Sotto**, EdD, Assistant Professor of Medicine, Indiana University

**for EVERYONE!**

*This course is for all healthcare professionals: clinicians, administrators & researchers*



**POWERFUL PRESENTERS:** **CAROLE KING**, SPHR, SHRM-SCP, Director of Human Resources, Shepherd Center; **JEFFREY WERTHEIMER**, PhD, ABPP-CN, Associate Director Physical Medicine and Rehabilitation, Cedar-Sinai Medical Center, Los Angeles, California; **PAMELA ROBERTS**, PhD, MSHA, OTR/L, SCFES, FAOTA, CPHQ, FNAP, FACRM, Executive Director and Professor, Cedars-Sinai; **ALISON M. COGAN**, PhD, OTR/L, Health Science Specialist, VA Greater Los Angeles Healthcare System; **THERESA L. BENDER PAPE**, DR.PH, MA, CCC-SLP/L, FACRM, Clinical Neuroscientist, Edward Hines Jr. VAH and Northwestern Feinberg School of Medicine  
**MODERATOR:** **TOLU O. OYESANYA**, PhD, RN, Assistant Professor, Duke University, School of Nursing  
**PANELISTS:** **DEBORAH BACKUS**, PT, PhD, FACRM, Vice President of Research & Innovation, Shepherd Center; **DOUGLAS I. KATZ**, MD, FACRM, Professor; Medical Director of Brain Injury, Boston University; Braintree Rehab, Newton Center, Massachusetts; **TAMARA BUSHNIK**, PhD, FACRM, Associate Professor, Rusk Rehabilitation, NYU Langone Health; **SUE ANN SISTO**, PT, MA, PhD, FACRM, Professor and Department Chair, University at Buffalo

**MORE & REGISTER:**  
[ACRM.org/ldc](http://ACRM.org/ldc)

**NEW!**

This course will enjoy joint sessions with the *ACRM Early Career Development Course* for more connecting & networking.

This course is a ticketed event with separate registration. This ticket is included in the WORLD PASS for incredible value.





# PRE-CONFERENCE

## SUN 26 SEPT 2021 10:00 AM - 5:00 PM ET **Early Career Development Course**

### **INCLUSIVE & CULTURALLY AWARE MENTORING**

A perennial favorite at ACRM, this course connects early career rehabilitation researchers with prominent and accomplished professionals. This is 'THE' place to learn from experts in interdisciplinary team science, government agency representatives, and distinguished scientists who will provide insights through didactic presentations, panel discussions, breakout sessions, and one-on-one networking opportunities. The course is designed for attendees to engage with renowned leaders in rehabilitation research, education, and clinical practice.



The keynote session speaker, **Sylk Sotto**, will kick-off the course with a talk on

inclusive and culturally aware mentorship and leadership titled, "*Culturally Competent Leadership in Rehabilitation Medicine and Research.*"

**Federal Funding**  
Representatives of agencies in the US and Canada will present on current policies, career opportunities, and research priorities at their respective agencies. LIVE Q&A.

**Roundtables**  
invaluable time with seasoned professionals mixing with attendees.

**Panel Discussions**  
Topics include: Mentoring Experiences for Early Career Success — being a good mentee / being a good mentor and How to Get a Seat at the Table — discussion with the four past ACRM presidents.

**NEW!**  
This course will enjoy joint sessions with the *ACRM Leadership Development Course* for more connecting & networking.

### ALL-STAR FACULTY LINE-UP



**ALL-STAR FACULTY LINE-UP:** **BRIAN DOWNER**, PhD Assistant Professor, University of Texas Medical Branch; **RALPH NITKIN**, PhD Health Scientist Administrator, National Center for Medical Rehabilitation Research, NICHD, NIH; **PATRICIA A. DORN**, PhD Director, Rehabilitation Research and Development Service, Department of Veterans Affairs; **A. CATE MILLER**, PhD Rehabilitation Program Specialist, National Institute on Disability, Independent Living, and Rehabilitation Research (NIDILRR); **KARIM KHAN**, MD, PhD Scientific Director, CIHR Institute of Musculoskeletal Health and Arthritis. Professor, Department of Family Practice and School of Kinesiology, University of British Columbia; **REZA EHSANIAN**, MD PhD PGY-3 Resident, Division of Physical Medicine and Rehabilitation, Department of Neurosurgery, University of New Mexico School of Medicine; **CHIH-YING (CYNTHIA) LI**, PhD, OTR/L Assistant Professor, University of Texas Medical Branch; **CECILIA S. HAN**, PhD Clinical Neuropsychologist, Winchester Medical Center; **JIABIN SHEN**, PhD Assistant Professor, Department of Psychology, University of Massachusetts Lowell; **ALAN KENDRICK**, PhD Assistant Dean, Graduate Student Development; **MELISSA BOSTROM**, PhD Assistant Dean, Graduate Student Professional Development; **CLAIRE KALPAKJIAN**, PhD, MS Associate Professor, Associate Chair for Research, University of Michigan; **NAMRATA GRAMPUROHIT**, PhD, OTR/L Assistant Professor, Thomas Jefferson University; **TOLU O. OYESANYA**, PhD, RN Assistant Professor, Duke University, School of Nursing; **ACRM PAST PRESIDENTS:** **DEBORAH BACKUS**, PT, PhD, FACRM Vice President of Research & Innovation, Shepherd Center; **DOUGLAS I. KATZ**, MD, FACRM Professor; Medical Director of Brain Injury, Boston University; Braintree Rehab; **SUE ANN SISTO**, PT, MA, PhD, FACRM, Professor and Chair of Rehabilitation Science, University of Buffalo; **TAMARA BUSHNIK**, PhD, FACRM Associate Professor, Rusk Rehabilitation, NYU Langone Health

Network with course speakers, other early career professionals, new members, and ACRM leadership.

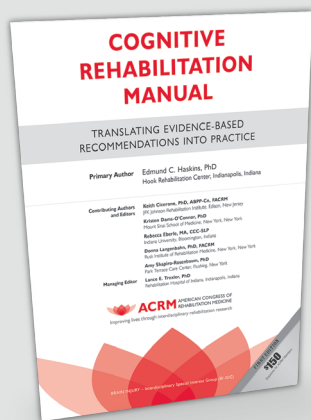
**MORE & register:** [ACRM.org/ecdc](https://www.acrm.org/ecdc)



This course is a ticketed event with separate registration. This ticket is included in the WORLD PASS for incredible value.

## ACRM COGNITIVE REHABILITATION TRAINING

### ONLINE COURSE



The ACRM Cognitive Rehabilitation Manual; Translating Evidence-Based Recommendations into Practice is a significant contribution to the field of brain injury rehabilitation. Never before have research outcomes been so accessible for use in everyday clinical practice.

Learn & earn  
**12 CME/CEUs right now**  
Then join us for...  
**LIVE Q&A w/Faculty**

### WHO IS THIS FOR?

All kinds of professionals who want to up their game and family members and caregivers are welcome, too. Common titles of attendees are: speech-language professionals, psychologists, occupational and physical therapists, physicians and other professionals serving people with brain injuries.

**90%+** of attendees surveyed recommend this course

More than 2,000 have attended this training course

8,000+ Manuals sold

### COURSE INCLUDES:

- 1) **THE MANUAL:** Printed or digital copy of the ACRM *Cognitive Rehabilitation Manual* (\$150 value) including worksheets. *Also available for purchase separately*
- 2) **ONLINE COURSE:** Access to previously recorded Cognitive Rehabilitation Training (\$395 value) audio with slides. *Also available for purchase separately*
- 3) **CME/CEUs:** 12.5 hours of continuing education in your choice of 10 disciplines



- 4) **INVITATION TO LIVE Q&A WITH FACULTY**  
(Day and time to be determined)

## Start learning & earning right now

Make sure you and your team have ALL of the up-to-date cognitive rehabilitation strategies. Access ALL of the evidence-based interventions ALL in ONE place.

[ACRM.ORG/cog2021](http://ACRM.ORG/cog2021)



@ACRM\_CogRehab



# PRE-CONFERENCE

## Instructional Courses



All courses below are INCLUDED in the WORLD PASS. Continuing education credits and conference slides are included. A few content leaders elect not to have their slides available to attendees, therefore some sessions may not be included.

### TWO-DAY INSTRUCTIONAL COURSE FRI - SAT 24 - 25 SEPT

IC10A & B	Emerging Concepts & Evidence Basis behind Novel Approaches to Managing Chronic Spinal Pain	PAIN CP INT NP TEC
<b>FRIDAY 24 SEPT</b>		
<b>MORNING</b>	10:00 AM - 2:00 PM IC2 Concussion: A Vestibular & Ocular Focus for the Treating Clinician (Intermediate Level)	CP ATH BI
IC5	Hanging by a Thread During Covid-19 Pandemic- Best Practices to Mitigate Frailty for At-Risk Community Dwelling Elderly	GER COVID-19 LM
IC6	Responding to Racism, Discrimination, and Microaggressions in Academic Medicine	CULTURAL COMPETENCY ETHICS
IC8	Culinary Coaching Instructional Course	LM ATH BI BHS CAN CP
<b>FULL DAY</b>	10:00 AM - 6:30 PM IC3 A Non Pharmacological Framework for Assessment & Treatment to Reduce Pain & Spasticity in Neurological Adult & Pediatric Patients	CP BI GER
IC7	Innovations in Limb Loss and Difference Rehabilitation	LR BHS CP
IC9	Integrating Patient Reported Outcomes (PRO) in Rehabilitation Clinical Practice	MEAS BI CP
IC11	Smartphone Apps for Day-to-Day Management of Executive Function Issues	TEC BI BHS MIL ND PAIN
IC48	ACRM 2021 Integrative Rehabilitation Research Mentoring & Career Development Fellowship for early career researchers from underrepresented & diverse backgrounds	CIRM CULTURAL COMPETENCY
<b>AFTERNOON</b>	2:30 PM - 6:30 PM IC12 Post-Traumatic Headaches	BI CP CIRM
IC14	"Keep Your Move in the Tube": An Evidence-Based Clinical Approach Implementation of a New Paradigm for Management of Cardiac Patients After Sternotomy	CP
IC15	American Spinal Injury Association 1/2 day at the ACRM Annual Conference 2021	SCI CP PAIN
<b>SATURDAY 25 SEPT</b>		
<b>MORNING</b>	10:00 AM - 2:00 PM ET IC19 FES Cycling & Stepping Interventions to Optimize Outcomes in Persons w/ Neurological Disorders	CP ND SCI TEC
IC21	Rehabilitation Treatment Specification System: Principles & Application in Rehabilitation Education, Research & Clinical Practice	CP
IC22	Facilitating Implementation Science in Practice: Secrets of Successful Clinical and Research Partnerships	HSR CP
IC23	Longitudinal Data Analysis & Practical Workshop Using R: Part I Introductory Topics	MEAS BI GER HSR ND PED
IC27	Different Paradigms of Electrical Stimulation for Neuromuscular Recovery after Spinal Cord Injury	SCI NP
IC36	Management of Vision Deficits Following Acquired Brain Injury	BI CP
<b>FULL DAY</b>	10:00 AM - 6:30 PM IC16 Behavioral Health Group Intervention — An Interactive Workshop	BHS CP
IC17	Introduction to Applying Integrative Cognitive Rehabilitation Psychotherapy to Brain Injury with Co-Occurring Issues	BI BHS CP
IC18	Disorder of Consciousness: The Implementation of Guideline Recommendations for Interdisciplinary Clinical Rehabilitation Practice: An Interactive Course	BI CP
IC25	Uncovering the Obstacles—Using Uniform Terminology to Identify Contextual & Environmental Factors that Affect Participation	MEAS CP HSR
IC26	Optimizing Pediatric NeuroRecovery: Benefits of Early Intervention and Activity-Based Therapy	PED BI SCI
IC28	Interdisciplinary Perspectives to Functional Measurement and Assessment of the Stroke Survivor	ST CP
IC29	The User Experience & Usability Research: In-depth look at Interviews, Observational Studies & Usability Testing	TEC
<b>AFTERNOON</b>	2:30 PM - 6:30 PM IC24 Longitudinal Data Analysis & Practical Workshop Using R: Part II Advanced Topics	BI GER HSR ND SCI
IC30	Improving Carry-Over: A Practical Lab on Approaches for Translating Therapeutic Gains Into Daily Activities	CP BHS ND NP ST TEC
IC31	Bench to Bedside: A Guide for Implementing Evidence Based Interventions into Practice at Organizational Level	CP BI SCI ST
IC32	Home Evaluations for Safe Discharge and Aging-in-Place	CP GER
IC33	Rehabilitation for Functional Movement Disorders: The Works	CP
IC34	Restoring Voluntary Grasping Function After Stroke or Spinal Cord Injury Using Functional Electrical Stimulation	TEC CP NP
<b>SUNDAY 26 SEPT</b>		
<b>MORNING</b>	10:00 AM - 2:00 PM ET IC20 A Guide to Best-Practice Interdisciplinary Goal Setting in Clinical Practice	CP BI COVID-19
IC35	Rhythm & the Motor System: New Opportunities for Gait Training	AN CP ST TEC
IC37	So You Want to be a TBI Expert Witness?	BI ETHICS
IC38	Interdisciplinary Care for Concussion/Mild Traumatic Brain Injury: A Model for Differential Diagnosis & Management	BI ATH CP
IC39	Comprehensive Management of Head & Neck Cancer: Optimizing Outcomes Through a Multi-Disciplinary Approach	CAN BHS TEC
IC40	Learn how Alexander Technique Interventions Can Complement & Enhance Rehabilitation Research & Interdisciplinary Clinical Practice	CIRM ATH BI CP
IC41	Practice Skills for Rehabilitation Professionals Working With Refugees and Asylum Seekers	CP INT
IC42	How to Effectively Use Secondary Data in Your Research Program	HSR
IC44	NIH Toolbox: Innovative Assessments for the Rehab	MEAS BHS
IC45	Optimizing Upper Extremity Reconstruction After Spinal Cord Injury: An Interdisciplinary, Systematic & Iterative Approach	SCI CP TEC
IC46	Functional Assessment and Prism Adaptation Treatment for Spatial Neglect after Stroke	ST BI CP
IC47	Powering Forward: Wheelchair Setup and Skills for Power Wheelchair Users	TEC BI CP GER

**KEY** AN: Arts & Neuroscience ATH: Athlete Development & Rehabilitation BHS: Behavioral Health Sciences BI: Brain Injury Rehabilitation CAN: CANcer rehabilitation CROSS-CUTTING / CC: Spanning Diagnoses  
CIRM: Complementary, Integrative, Rehabilitation Medicine CP: Clinical Practice GER: GERiatric Rehabilitation HSR: Health Services Research INT: INTernational LR: Limb Care LM: Lifestyle Medicine  
MEAS: MEASurement MIL: MILitary/veterans affairs ND: Neurodegenerative Disease (e.g. MS, Parkinson's disease) NP: NeuroPlasticity (includes neuroscience) PAIN: PAIN rehabilitation PED: PEDIatric rehabilitation  
QUAL: QUALity Improvement & Implementation Science RTS: Rehabilitation Research Specifications SCI: Spinal Cord Injury ST: Stroke Rehabilitation TEC: TEChnology (robotics, assistive technology, mHealth)

# PRE-CONFERENCE

## TWO-DAY INSTRUCTIONAL COURSE

FRI-SAT IC10A & IC10B: **Emerging Concepts and Evidence Basis Behind Novel Approaches to Managing Chronic Spinal Pain / Day 1 of 2** FOCUS: PAIN, CP, INT, NP, TEC FACULTY: Areerat Suputtitada, Thiru Annaswamy

Two-day course in advanced spine pain management focusing primarily on Emerging Concepts and Novel Approaches, and current state of evidence. Register: [ACRM.org/ic10](http://ACRM.org/ic10)

### FRIDAY 24 SEPT

10:00 AM - 2:00 PM IC2: **Concussion: A Vestibular and Ocular Focus for the Treating Clinician (Intermediate Level)** FOCUS: CP, ADSR, BI FACULTY: Elizabeth Jenson, Twyla Evano, Valerie Quan

When it comes to treating individuals with Post Concussion Syndrome (PCS), physical therapists have a strong background in managing vestibular deficits and exercise intolerance caused by physiological dysfunction. Some specialized PTs also have experience in treating oculomotor deficits, but may find themselves limited by their understanding of assessment tools and how to progress interventions. Another common challenge is identifying how to target oculomotor interventions while integrating other body functions and structures, such as the vestibular system, musculoskeletal system, and autonomic nervous system, without causing undesired rebound effects. This gap in knowledge must be bridged in order to provide a comprehensive plan of care for individuals with PCS. In this course, we will demonstrate the use of the Vestibular/Ocular Motor Screening (VOMS) as an assessment tool for real patient cases. We will also introduce the Vestibular Ocular Pyramid (VOP) as a framework that effectively targets vestibular and oculomotor impairments. Register: [ACRM.org/ic2](http://ACRM.org/ic2)

10:00 AM - 2:00 PM IC5: **Hanging by a Thread During Covid-19 Pandemic- Best Practices to Mitigate Frailty for At-Risk Community Dwelling Elderly** FOCUS: GER, COVID-19, LM FACULTY: Harsha Deoghare, Kathleen Bianco, Leslie Zarrinkhameh, Cheryl Hickey, Heather Thomas

The unprecedented situation arising from the COVID-19 outbreak is destined to have a long-term and profound impact on older adults' health and well-being. Community dwelling frail adults are at exponentially higher risk of mortality and morbidity in this pandemic. This course will involve a multi-disciplinary panel that will review the concepts of frailty, health screening, polypharmacy, nutrition, and health and wellness for at-risk community dwelling older adults. Evidence based strategies to keep older adults safe and functional at home and delay institutionalization will be discussed. Wellness resources for successful aging will be presented and hands-on activities will be used to enhance participant learning. We will also discuss the latest evidence of preventative strategies for frailty prevention during COVID-19 pandemic as well as outcome of COVID-19 in patients at multiple stages of frailty. Register: [ACRM.org/ic5](http://ACRM.org/ic5)

10:00 AM - 2:00 PM IC6: **Responding to Racism, Discrimination, and Microaggressions in Academic Medicine** FOCUS: CULTURAL COMPETENCY, ETHICS FACULTY: Sylk Sotto, Francesca Duncan, Joseph Smith

Academic medicine has long faced the challenge of addressing health inequities, reflecting on how these contribute to structural racism, and perpetuating negative social determinants of health. Most recently, we have constructed opportunities for dialogues about racism, discrimination, and microaggressions (RDM). We will encourage participants to (1) openly discuss RDM and the impact they have in academia, (2) learn about tools to address and respond to RDM, and (3) move towards the creation of inclusive environments. Register: [ACRM.org/ic6](http://ACRM.org/ic6)

10:00 AM - 2:00 PM IC8: **Culinary Coaching Instructional Course** FOCUS: LM, ADSR, BI, BHS, CAN, CP FACULTY: Ran Polak

Obesity and unhealthy nutrition are major public health and economic threats and disproportionately high among adults with disabilities. Most clinicians grapple with the challenge of enabling patients to be drivers of their own wellness regimen. Nutrition is a vital part of many rehabilitation conditions such as spinal cord injury, stroke, cancer rehabilitation, brain health, and geriatric rehabilitation. This culinary medicine course offers an introduction into culinary coaching, an evidence-based telemedicine strategy that combines culinary training with health and wellness coaching. Attendees receive the latest updates of the culinary coaching approach and acquire new skills, tools and resources to empower patients to adopt sustainable nutritious home cooking behavior. The economics of healthcare reform increasingly pressure clinicians to promote healthy nutrition. This course provides education and experience that will keep clinicians at the forefront of this critical global trend, leading by example to improve and increase healthy eating for patients and themselves. Register: [ACRM.org/ic8](http://ACRM.org/ic8)

10:00 AM - 6:30 PM IC3 **A Non Pharmacological Framework for Assessment and Treatment to Reduce Pain & Spasticity in the Neurological Adult & Pediatric Patient** FOCUS: CP, BI, GER FACULTY: Annie O'Connor, Melissa Watson

This workshop will demonstrate a paradigm shift for the evaluation and treatment selection of pain and spasticity in the neurological adult and pediatric patient. Using the validated and reliable Pain Mechanism Classification System principles applied to both pain and spasticity, we will present both as a peripheral nervous system dominated mechanism. Thus allowing two peripheral neurogenic mechanisms to be highlighted. Directional preference and neurodynamic exercise selection for peripheral neurogenic mechanisms can have lasting effects when selected and dosed correctly. Spasticity can be an expression of peripheral nervous system irritation in an impaired central nervous system. The prevalence of spasticity as an upper motor neuron problem is small compared to the peripheral neurogenic mechanisms. Often spasticity is a symptom of a peripheral nervous system mechanism domination and requires the correct subgrouping and therapeutic exercise to decrease spasticity to achieve optimal independence in function for the neurological adult and pediatric patient. Register: [ACRM.org/ic3](http://ACRM.org/ic3)

10:00 AM - 6:30 PM IC7 **Innovations in Limb Loss and Difference Rehabilitation** FOCUS: LR, BHS, CP FACULTY: Prateek Grover, Leonard and D. Hoffmann, Branden Petersen, Gerasimos Bastas, Jill Cannoy, Daniel Lee, Dan Ignaszewski, John Felder, Phil Stevens, Danielle Melton, Kristin Reeves, Colleen Coulter

Limb loss and difference rehabilitation is a rapidly evolving field, driven simultaneously by novel technology, surgical techniques, rehabilitation protocols and a focused systems and stakeholders approach to enable access to both technology and rehabilitation services. Attendees are invited to participate in this full-day exploration of the innovations and trends in the field of limb care that spans preservation, restoration, rehabilitation and participation. A multi-disciplinary team of physiatrists, patient advocates, surgeons, prosthetists and therapists will guide attendees through four evidence-based complementary modules, namely, systems, medical, technical and rehabilitation innovations. Cross-modular themes of note include the limb care continuum framework, osseointegration, TMR, cardiovascular physiology, risk modification, microprocessor technology and outcomes, and specialized therapy protocols. Attendees are expected to leave the course with a comprehensive understanding of the field of limb care as well as innovations and approaches within each discipline, be it therapy, medicine, O&P, patient advocacy, prosthetics or health systems research. Register: [ACRM.org/ic7](http://ACRM.org/ic7)

### KEY

AN: Arts & Neuroscience ATH: Athlete Development & Rehabilitation BHS: Behavioral Health Sciences BI: Brain Injury Rehabilitation CAN: CANcer rehabilitation CROSS-CUTTING / CC: Spanning Diagnoses CIRM: Complementary, Integrative, Rehabilitation Medicine CP: Clinical Practice GER: Geriatric Rehabilitation HSR: Health Services Research INT: International LR: Limb Care LM: Lifestyle Medicine MEAS: MEASurement MIL: Military/veterans affairs ND: Neurodegenerative Disease (e.g. MS, Parkinson's disease) NP: NeuroPlasticity (includes neuroscience) PAIN: PAIN rehabilitation PED: PEdiatric rehabilitation QUAL: QUALity Improvement & Implementation Science RTS: Rehabilitation Research Specifications SCI: Spinal Cord Injury ST: Stroke Rehabilitation TEC: TECHNOlogy (robotics, assistive technology, mHealth)

# PRE-CONFERENCE

10:00 AM - 6:30 PM IC9 **Integrating Patient Reported Outcomes (PRO) in Rehabilitation Clinical Practice** FOCUS: MEAS, BI, CP FACULTY: David Tulsy, Emily Evans, Ann Guernon, Namrata Grampurohit, Kristen Maisano, Zachary Boychuck, Sara Ahmed, Julie Schwertfeger, Piper Hansen, Susan Bartlett, Pascaline Kengne Talla, Jennifer Weaver

An introductory course on implementation science and the integration of patient-reported outcomes (PRO) into clinical practice, with a focus on interpretation of PROM scores to guide clinical decisions. Attendees will be introduced to guidelines that can be used to direct PRO use for patient care and quality improvement. Participants will learn about implementation science principles and how they can help identify strategies that address the contextual barriers and facilitators to using PRO measures in a specific clinical context. The course learning objectives will also target the evaluation of the implementation process and the effectiveness of using PRO measures for desired outcomes such as patient activation or goal achievement. Participants will benefit from ongoing initiatives and information exchange between participants using a structured and interactive approach. The course is intended for clinicians, but also for anyone with introductory knowledge of PROs and an interest in their use for enhancing clinical practice. Register: [ACRM.org/ic9](https://www.acrm.org/ic9)

10:00 AM - 6:30 PM IC11 **Smartphone Apps for Day-to-Day Management of Executive Function Issues** FOCUS: TECH, BI, BHS, MIL, ND, PAIN FACULTY: Lisa Hirsch, Michelle Wild, Kristi Kragthorpe  
Clients with traumatic brain injuries, strokes, multiple sclerosis, ADHD, chronic fatigue, Chemobrain, lupus and other conditions typically face challenges in memory, organization, executive functioning, energy, goal-setting/motivation and self-regulation. Training patients in how to use smartphone and tablet apps improves independence by addressing all these areas of cognitive challenge in a manner that is convenient and non-stigmatizing. See demonstrations of the seven apps that can be used to compensate for the majority of cognitive deficits experienced at work, home and school and learn how you can use them yourself in the rehabilitation process. Register: [ACRM.org/ic11](https://www.acrm.org/ic11)

10:00 AM - 6:30 PM IC48 **ACRM 2021 Integrative Rehabilitation Research Mentoring & Career Development (DIRRMCD) Fellowship for early career researchers from underrepresented and diverse backgrounds** FOCUS: CIRM, CULTURAL COMPETENCY FACULTY: Mark Hyman Rapaport, Claudia Morris, Abigail Powers Lott, Natoshia Raishevich Cunningham, Ashli Owen-Smith, Sonya Kim, Patricia Heyn  
This one-day scientific workshop is funded by the National Center for Complementary and Integrative Health (NCCIH) under Award Number R13AT011146. The goal of this program is to increase both evidence-based knowledge on complementary integrative medicine (CIM) and enhance research diversity among the rehabilitation field by fostering the participation of underrepresented minority (URM) early career scientists. Health scientists and practitioners from diverse backgrounds contribute important clinical practice and research in the field. Although the NIH and the American Medical Association have developed many initiatives to support and ensure greater diversity in the medical and health sciences workforce, significant barriers to having an inclusive, equal, and diverse culture and climate in the biomedical field remain. The CIM field is well positioned to close this gap because it relies on the interdisciplinary representation by many disciplines, practitioners, stakeholders, and consumers. Register: [ACRM.org/ic48](https://www.acrm.org/ic48)

2:30 PM - 6:30 PM IC12 **Post-Traumatic Headaches** FOCUS: BI, CP, CIRM FACULTY: Sara Etheredge, Miriam Segal, Nathan Zasler, Sheryl Katta-Charles

In this instructional course, learners will understand the framework for diagnosing and treating various headache endotypes resulting from traumatic head and neck injuries. Multiple speakers will be discussing the pathophysiology and treatment of the following headache endotypes: 1. Tension-type headaches, 2. Craniofacial neuralgias, 3. Cervicogenic headaches, and 4. Migraines. We will be discussing treatment options, well-known and newer treatment options, both pharmacologic and non-pharmacologic. For example, we will review in-depth a relatively novel class of medications, the CGRP-antagonists. We will demonstrate procedures and identify anatomy on a head and neck model for procedures during the breakout group. Register: [ACRM.org/ic12](https://www.acrm.org/ic12)

2:30 PM - 6:30 PM IC14 **"Keep Your Move in the Tube": An Evidence-Based Clinical Approach to Implementation of a New Paradigm for Management of Cardiac Patients After Sternotomy** FOCUS: CP FACULTY: Richard Gach, Susan Triano

This workshop will present the evidence base that supports the safe use of the upper limbs and is founded on the principles of biomechanics: "Keep Your Move in the Tube™". Participants will be provided with knowledge and resources to support the implementation of "Keep your Move in the Tube" into postoperative care, and cardiac rehabilitation. Information will be provided that to prove forces generated during upper limb exercises and everyday tasks (i.e. chest compressions during CPR and opening doors etc.). Participants will also be instructed of how to safely incorporate this program into their clinical practice and into their organizations. Register: [ACRM.org/ic14](https://www.acrm.org/ic14)

2:30 PM - 6:30 PM IC15 **American Spinal Injury Association 1/2 day at the American Congress of Rehabilitation Medicine Annual Conference 2021** FOCUS: SCI, CP, PAIN FACULTY: Allison Kessler, M. Kristi Henzel, Cody Unser, Cristina Sadowsky, Michael Stillman, Jill Wecht, Steffen Franz, Elmea Smith

The "ASIA 1/2 at ACRM" course attempts to introduce and educate participants in 1) Primary care services models that are suited and optimized for use in individuals with SCI related paralysis; educating healthcare providers familiar with individuals with SCI how to deploy the models to primary care providers delivering infrequent care to this population. 2) Becoming familiar with ASIA's educational offerings through its' eLearning Center. The sessions are planned to be interactive and solicit audience feedback. Register: [ACRM.org/ic15](https://www.acrm.org/ic15)

## SATURDAY 25 SEPT

10:00 AM - 2:00 PM IC19 **FES cycling and stepping Interventions to optimize outcomes in persons with neurological disorders** FOCUS: CP, ND, SCI, TEC FACULTY: Wendy Warfield, Deborah Backus, Rebecca Martin

This instructional course will present the theory supporting the use of functional electrical stimulation (FES) interventions to decrease impairment and improve function in adults and children with neurological conditions. Presenters will provide suggestions for translation of evidence-based principles into clinical practice for the use of FES interventions to optimize outcomes in persons with severe weakness or paralysis, fatigue, and other impairments impacting the ability to safely utilize these interventions. Presenters will introduce attendees to various FES-assisted interventions and provide guidelines for setting the parameters of the FES devices to elicit the greatest response and positive outcomes in people with neurological conditions, such as spinal cord injury and multiple sclerosis. Case examples will be discussed to demonstrate the application of the evidence and principles presented throughout the course. Register: [ACRM.org/ic19](https://www.acrm.org/ic19)

### REGISTER NOW

Secure your spot and the best rate  
[ACRM.org/register](https://www.acrm.org/register)



# PRE-CONFERENCE

10:00 AM - 2:00 PM IC21 **Rehabilitation Treatment Specification System: Principles and Application in Rehabilitation Education, Research, and Clinical Practice** FOCUS: CP FACULTY: John Whyte, Andrew Packel, Jeanne Zanca, Susan Fasoli, Sue Ann Sisto, Shanti Pinto, Mary Ferraro, Jarrad Van Stan

This symposium will orient learners to the NIDILRR- and PCORI-funded Rehabilitation Treatment Specification System (RTSS), an interprofessional standardized system for defining and specifying rehabilitation treatments. Examples of clinical treatments and case scenarios will be discussed to: (1) elucidate the structure, principles, and terminology of the RTSS; (2) facilitate reflection on active ingredients and targets of rehabilitation interventions; and (3) demonstrate how the RTSS can stimulate critical thinking and strengthen clinical reasoning underlying the planning and delivery of interventions. Learners will be provided opportunities to practice applying the RTSS to treatment examples. Register: [ACRM.org/ic21](http://ACRM.org/ic21)

10:00 AM - 2:00 PM IC22 **Facilitating Implementation Science in Practice: Secrets of Successful Clinical and Research Partnerships** FOCUS: HSR, CP FACULTY: Pamela Toto, Jennifer Moore, Linda Resnik, Eric Roseen, Beth Fields, Anashua Elwy, Justin Smith, Miriam Rafferty, Natalie Douglas

This instructional course will introduce the foundational principles of implementation science and how to apply them within health systems and communities. The course is designed for clinicians, researchers, and administrators, with a focus on developing partnerships to facilitate successful implementation. Participants will discuss barriers and facilitators to implementation, and will learn about implementation strategies that can improve adoption of evidence-based practices. We will highlight successful collaborations between clinicians and researchers. Examples will be provided across physical therapy, occupational therapy, and speech language pathology. Partnerships will be described in local health settings, communities, and national health systems. Finally, resources for further education in implementation research and practice will be shared. This program is supported by the Dissemination & Implementation Research Task Force of the ACRM Health Services Research Networking Group, the Learning Health Systems Rehabilitation Research Network, and the Center for Smart Use of Technologies to Assess Real-World Outcomes. Register: [ACRM.org/ic22](http://ACRM.org/ic22)

10:00 AM - 2:00 PM IC23 **Longitudinal Data Analysis and Practical Workshop Using R: Part I Introductory Topics** FOCUS: MEAS, BI, GER, HSR, ND, PED FACULTY: Allan Kozlowski, Keith Lohse

This combination lecture and hands-on workshop will introduce clinicians and researchers to longitudinal model building using linear mixed effects regression (LMER) in the R statistical environment. Rehabilitation outcomes are better suited to multi-level longitudinal modeling than to pre-post regression or repeated measures analysis of variance (RM-ANOVA). LMER has real advantages over RM-ANOVA in terms of flexibility and statistical power. Following the course, learners will be able to appraise existing data for suitability to LMER, discuss the relevance of such models with statistical consultants, and plan for data collection in future projects which are suited to modeling outcomes longitudinally. Register: [ACRM.org/ic23](http://ACRM.org/ic23)

10:00 AM - 2:00 PM IC27 **Different Paradigms of Electrical Stimulation for Neuromuscular Recovery after Spinal Cord Injury** FOCUS: SCI, NP FACULTY: Ashraf Gorgey, David Dolbow

TenMES: neuromuscular electrical stimulation, RT: resistance training, TS: transspinal, SCI: spinal cord injury Register: [ACRM.org/ic27](http://ACRM.org/ic27)

10:00 AM - 2:00 PM IC36 **Management of Vision Deficits Following Acquired Brain Injury** FOCUS: BI, CP FACULTY: Cathy Stern

Visual processing problems are very common following brain injury. Hidden visual problems are often overlooked and when not treated they can impair or lengthen rehabilitation success. This course will assist you in diagnosing and understanding treatment for patients with visual deficits following brain injury. How to test for the specific visual deficits accompanying brain injury, concussion, stroke, and trauma will be covered along with treatment protocols including lenses, prisms, filters, and neuro-optometric vision rehabilitation. Dynamic presentation will give you the opportunity to experience testing and treatment used to help more brain injury patients recover successfully. Register: [ACRM.org/ic36](http://ACRM.org/ic36)

10:00 AM - 6:30 PM IC16 **Behavioral Health Group Intervention - An Interactive Workshop** FOCUS: BHS, CP FACULTY: Carly Cooper, Amelia Butler

This workshop is dedicated to promoting the role of group intervention in outpatient behavioral health presented by experienced occupational therapists who are subject matter experts in the topic. This energetic and interactive workshop includes a review of behavioral health diagnosis, medications, evaluation, documentation and hands-on group activities from the presenters' arsenal that allow individuals the opportunity to role play as both facilitator and group participant. Register: [ACRM.org/ic16](http://ACRM.org/ic16)

10:00 AM - 6:30 PM IC17 **Introduction to Applying Integrative Cognitive Rehabilitation Psychotherapy to Brain Injury with Co-Occurring Issues** FOCUS: BI, BHS, CP FACULTY: Mark Pedrotty

Clinicians will be introduced to an integrative cognitive rehabilitation psychotherapy model that includes simultaneous assessment and treatment of three domains (cognitive, psychological, and substance and alcohol use) and eight levels of intervention (medication, cognitive retraining, internal compensatory strategies, external compensatory strategies, environmental adaptations, alternative interventions, healthy lifestyle, and medical) for each of the three domains across all ages using a bio-cog-psycho-social model and evidence-based interventions for people living with brain injury. Motivational Interviewing (MI) will be discussed as a clinical intervention to assess readiness to change and setting goals and objectives. Four stages of treatment across the three domains will be described (surviving, healing, thriving, and ending) within setting up a treatment plan and monitoring progress. Identification and management of potential ethical and cultural issues will be discussed. Register: [ACRM.org/ic17](http://ACRM.org/ic17)

10:00 AM - 6:30 PM IC18 **Disorder of Consciousness: The Implementation of Guideline Recommendations for Interdisciplinary Clinical Rehabilitation Practice: An Interactive Course** FOCUS: BI, CP FACULTY: Amy Rosenbaum, Katherine O'Brien, Brooke Murtaugh, Craig DiTommaso

This one-day Disorders of Consciousness (DOC) instructional course has been developed for the treating clinician. This course will focus on application of evidence-based Clinical Guideline Recommendations as it relates to the domains of DOC assessment, diagnosis, medical management, prognosis and family counseling. Content will assist attendees conceptualize how to develop transdisciplinary care plan and road map to optimize outcomes and quality of life for the DOC population. This course is appropriate for all disciplines working within DOC care and programs including physicians, neuropsychologists, therapists, nurses and care managers. Active learning group activities and case studies will be included to promote problem-solving, collaboration and networking among attendees. Register: [ACRM.org/ic18](http://ACRM.org/ic18)

**KEY**

AN: Arts & Neuroscience ATH: Athlete Development & Rehabilitation BHS: Behavioral Health Sciences BI: Brain Injury Rehabilitation CAN: CANcer rehabilitation CROSS-CUTTING / CC: Spanning Diagnoses CIRM: Complementary, Integrative, Rehabilitation Medicine CP: Clinical Practice GER: GERiatric Rehabilitation HSR: Health Services Research INT: INternational LR: Limb Care LM: Lifestyle Medicine MEAS: MEASurement MIL: MILitary/veterans affairs ND: Neurodegenerative Disease (e.g. MS, Parkinson's disease) NP: NeuroPlasticity (includes neuroscience) PAIN: PAIN rehabilitation PED: PEDiatric rehabilitation QUAL: QUALity Improvement & Implementation Science RTS: Rehabilitation Research Specifications SCI: Spinal Cord Injury ST: Stroke Rehabilitation TEC: TEChnology (robotics, assistive technology, mHealth)

10:00 AM - 6:30 PM IC25 **Uncovering the Obstacles- Using a Uniform Terminology to Identify Contextual and Environmental Factors that Affect Participation** FOCUS: MEAS, CP, HSR FACULTY: Leon Kirschner, Nancy Doyle, Brigitte Desport

Environmental design and environmental modification can be an integral to a comprehensive intervention program designed to increase participation for people with disabilities. This session presents a new typology of terms for contextual factors that facilitate or limit participation in daily activities. It was designed to be aligned with the World Health Organizations International Classification of Function. We will present clinical case studies to demonstrate practical application of the typology. We will discuss how using the typology expands the scope of assessment and intervention and how that may result in enhanced participation for clients at the individual, group, and population levels. After an introduction to the typology and it's development, this course will provide opportunities for use of the terminology for assessment and intervention using case studies in a workshop format. Register: [ACRM.org/ic25](http://ACRM.org/ic25)

10:00 AM - 6:30 PM IC26 **Optimizing Pediatric NeuroRecovery: Benefits of Early Intervention and Activity-Based Therapy** FOCUS: PED, BI, SCI FACULTY: Andrea Behrman, Mary Pengeley, Rebecca Martin, Harald Schubert, Jianhua Wu, Dagmar Siebold

Evidence demonstrates that activity is essential for development and repair of the central nervous system, yet traditional rehabilitation approaches lack the intensity necessary to drive neural change. Activity-Based Therapy (ABT) represents an evolving shift in neurorehabilitation. Based on activity-dependent plasticity, ABT offers high intensity activation of the nervous system to optimize the capacity for recovery. In this course, past clinical assumptions will be compared to recent scientific evidence guiding development of ABT. We will describe activity-based interventions and strategies, including mechano-stimulation, functional electrical stimulation, massed practice, and task specific training. Mechano-stimulation will be emphasized as a tool in early intervention and emergent assessment tools with sufficient sensitivity to measure change in the very young patient will be discussed. Using lecture and case studies we will review current research trends, prescriptive diagnostics, physiology and pathophysiology, parameter selection and curation of treatment goals. Register: [ACRM.org/ic26](http://ACRM.org/ic26)

10:00 AM - 6:30 PM IC28 **Interdisciplinary Perspectives to Functional Measurement and Assessment of the Stroke Survivor** FOCUS: ST, CP FACULTY: Christina del Toro, Keenan Whitesides, Christina Hanson, Sarah Herron, Eric Larson, Veronica Rowe, Maria Cecilia Alpanan, Michelle Armour

Stroke is one of the leading causes of disability in the United States. Given that stroke can affect all aspects of bodily function and abilities, multiple measurements and assessments are administered across disciplines. These measurements are critical in evaluating function and providing effective care for the stroke survivor. Clinical knowledge of various standardized assessments is required of all medical professionals to create effective goals for stroke patients to achieve functional outcomes.. Register: [ACRM.org/ic28](http://ACRM.org/ic28)

10:00 AM - 6:30 PM IC29 **The User Experience and Usability Research: In-depth look at Interviews, Observational Studies and Usability Testing** FOCUS: TEC FACULTY: Rachel Proffitt, Megan Mitchell

Technology is progressing at a rapid pace. This forces companies and research labs into design and development processes which often focus on quick turnaround. Healthcare facilities are forced into clinical decision-making processes which focus on reimbursement. These processes can minimize time and maximize profit but often leave the end-user hanging by a rope- creating a great need for understanding usability in order to provide the best care.

Understanding the differences between usability research methods and how to choose an effective method can be overwhelming and seem complicated. However, even the smallest labs, clinics or start-ups can incorporate basic methods to improve their processes. This course will provide an overview of usability research methods- diving deeper into best practices for incorporating interviews and observational and usability studies. A hands-on application to demonstrate how these methods can be incorporated into your design and development or clinical decision-making processes will be provided. Register: [ACRM.org/ic29](http://ACRM.org/ic29)

2:30 PM - 6:30 PM IC24 **Longitudinal Data Analysis and Practical Workshop Using R: Part II Advanced Topics** FOCUS: MEAS, BI, GER, HSR, ND, SCI FACULTY: Keith Lohse, Allan Kozlowski

Rehabilitation researchers and clinicians often deal with outcomes that evolve over time and are not suited to binary categorization of pre- post-assessments, as is common in other areas of medicine and healthcare. This course will build on our previously offered introduction to modeling longitudinal outcomes in a lecture and practical workshop format. Advanced topics include methods to assess data and model structure visually, statistically, and conceptually; and to fit more complex models and outcome types. While not a prerequisite, course participants will benefit from having a working knowledge of the introductory course content and of the R environment. Register: [ACRM.org/ic24](http://ACRM.org/ic24)

2:30 PM - 6:30 PM IC30 **Improving Carry-Over: A Practical Lab on Approaches for Translating Therapeutic Gains Into Daily Activities** FOCUS: CP, BHS, ND, NP, ST, TEC FACULTY: Kristina Kelly, Elizabeth Skidmore, Lynne Gauthier

Evidence suggests that focus on carry-over promotes increased use of a weaker limb in everyday life. The CI therapy transfer package is a set of behavior change techniques that facilitate carry-over and can be used with any intervention. It encourages patients to take active responsibility for engaging in therapeutic activities throughout the day, effectively extending the amount of time spent on rehabilitation; it also teaches problem-solving during tasks in a way that can be applied independently even after the treatment period ends. During this course, participants will gain the knowledge and skills to implement the transfer package into clinical practice. Register: [ACRM.org/ic30](http://ACRM.org/ic30)

2:30 PM - 6:30 PM IC31 **Bench to Bedside: A Guide for Implementing Evidence Based Interventions into Practice at Organizational Level** FOCUS: CP, BI, SCI, ST FACULTY: Larissa Swan, Chris Carter

Implementation of evidence based interventions (EBI) has proven to be a challenge in the rehabilitation community. Literature indicates that the integration of EBI into consistent practice can take 17 or more years. Therefore, individuals are not benefitting from interventions evidence has shown will enhance the rehabilitation process. This workshop will provide an overview of Knowledge Implementation theory, the Knowledge-to-Action cycle. Participants will have an opportunity to work in facilitated groups to begin a preliminary analysis of their own organization to develop plans as to how to capitalize on facilitators and overcome barriers to implementing EBI as a practice standards. Register: [ACRM.org/ic31](http://ACRM.org/ic31)

**Course & faculty details are in the ACRM Searchable Online Program [ACRM.org/op](http://ACRM.org/op)**

**network >**  
**collaborate >**  
**connect > #ACRM2021**



[ACRM.org/op](http://ACRM.org/op)



2:30 PM - 6:30 PM IC32 **Home Evaluations for Safe Discharge and Aging-in-Place** FOCUS: CP, GER FACULTY: Suzanne Burns, Noralyn Pickens, Rochelle Mendonca, Nathan Spaeth, Ashley MacKinen, Kathryn Primrose, Laryn O'Donnell, Roger Smith

People with new and existing disabilities frequently desire to age-in-place or return to their home. Many providers are expected to evaluate the home to support community living goals; however, home evaluations are complex requiring additional skills and training. This is particularly challenging if the providers are novices or infrequently conduct home safety evaluations. Additionally, telehealth and virtual assessment needs (or demands) are rising. This course will provide in-depth information on how to conduct a quality home evaluation selecting the best tool to meet their population needs. Attendees will identify and select assessments for implementation into practice, and discuss barriers and approaches for successful implementation within the group. The course will provide an opportunity for attendees to further develop their skill set for conducting home evaluations among a range of PWD. Register: [ACRM.org/ic32](https://www.acrm.org/ic32)

2:30 PM - 6:30 PM IC33 **Rehabilitation for Functional Movement Disorders: The Works** FOCUS: CP FACULTY: Stacey Zalanowski, Seth Herman, Amy Knight, Ginger Polich, Victor Mark

This Instructional Course will provide attendees the knowledge and skills to evaluate and manage the rehabilitation of Functional Movement Disorders (FMDs). Until recent years FMDs were underdiagnosed and overlooked for physical rehabilitation programs. However, recent studies indicate the neuroscientific findings of FMDs that implicate neurological disease. Moreover, clinical trials for FMDs have shown that physical rehabilitation (PT, OT) combined with Cognitive Behavioral Therapy (CBT) can rapidly and substantially overcome the disability. Our presenters will detail the scientific foundation for FMDs, methods to diagnose and triage FMDs in the acute hospital, foundation for developing an outpatient FMD rehabilitation program, and the evidence basis for improving FMDs with CBT combined with PT or OT. This course will be supplemented by video illustrations of techniques for ruling-in FMDs and individual case presentations of FMDs in response to rehabilitation. At the conclusion of this course, attendees will be able to understand and manage FMDs. Register: [ACRM.org/ic33](https://www.acrm.org/ic33)

2:30 PM - 6:30 PM IC34 **Restoring Voluntary Grasping Function After Stroke or Spinal Cord Injury Using Functional Electrical Stimulation** FOCUS: TEC, CP, NP FACULTY: Naaz Kapadia-Desai, Milos Popovic

One of the most promising approaches to improve motor function in individuals with neurological ailments is Functional Electrical Stimulation (FES). FES is a methodology that uses bursts of short electrical pulses to generate muscle contraction. If these electrical pulses are applied to motor nerves they can elicit action potentials that propagate along the axons towards the target muscle(s). The aim of this workshop is to illustrate the application of FES therapy for retraining upper extremity function, in particular grasping, in individuals with stroke and spinal cord injury. Register: [ACRM.org/ic34](https://www.acrm.org/ic34)

## SUNDAY 26 SEPT

10:00 AM - 2:00 PM IC20 **A Guide to Best-Practice Interdisciplinary Goal Setting in Clinical Practice** FOCUS: CP, BI, COVID-19 FACULTY: Andrew Bateman, Penny Trayner, Merryn Dowson

Goal setting is crucial in neurorehabilitation for encouraging collaboration in multi-disciplinary teams, motivating patients and tracking progress. The key components of good goal setting, however, are often misunderstood. This instructional course aims to outline the best-practice process for goal-setting in clinical neurorehabilitation practice, resolving confusion around terminology and interdisciplinary collaboration. The course will address barriers to change that can prevent the adoption of new goalsetting practices, and suggest avenues of change. Understanding the difficulty of applying theoretical procedures to clinical practice, the course will also offer an opportunity for operationalising the new skills learned with real-world clinical data. Register: [ACRM.org/ic20](https://www.acrm.org/ic20)

10:00 AM - 2:00 PM IC35 **Rhythm & the Motor System: New Opportunities for Gait Training** FOCUS: AN, CP, ST, TEC FACULTY: Abigail Spaulding, Louis Awad, Brian Harris

Decades of basic and clinical research demonstrate the effectiveness of Rhythmic Auditory Stimulation (RAS) across neurological diagnostic groups. The most recent research has shown that motor training with rhythm leads to neurophysiological changes along with beneficial clinical outcomes, including improvements in gait, neuromuscular control, and function. In this presentation, we will discuss the neural foundation and practical applications of RAS through lecture, case examples with videos, and hands-on demonstrations. Register: [ACRM.org/ic35](https://www.acrm.org/ic35)

10:00 AM - 2:00 PM IC37 **So You Want to be a TBI Expert Witness?** FOCUS: BI, Ethics FACULTY: Arthur Ameis, Nathan Zasler, Scott Bender

The instructional course, "So you want to be a TBI expert witness?" will familiarize attendees with various aspects of TBI/ABI. clinicolegal and expert witness work within inside view from experienced expert witnesses on the machinations of such work. Register: [ACRM.org/ic37](https://www.acrm.org/ic37)

10:00 AM - 2:00 PM IC38 **Interdisciplinary Care for Concussion/ Mild Traumatic Brain Injury: A Model for Differential Diagnosis and Management** FOCUS: BI, ADSR, CP FACULTY: Amber Schwartz, Gregory Brown, Cheryl Appleberry, Russell Gore, Tracey Wallace, April Hodge, Julia Hurtado

Recent advances in mild traumatic brain injury (mTBI) research have led to a greater understanding of mTBI resulting in rapid changes in the field and raising dilemmas about how to best apply current knowledge. This talk will discuss emerging data that illustrates dysfunction in cortical networks after mTBI and will describe cutting edge interdisciplinary diagnosis and treatment protocols. It will surface critical issues faced by leaders in the field who are working to apply this latest knowledge and will culminate in an interactive discussion aimed at facilitating exchange of ideas and experiences regarding approaches to addressing practice dilemmas, optimizing mTBI care practices, and accelerating knowledge translation. Register: [ACRM.org/ic38](https://www.acrm.org/ic38)

Course & faculty details are in the ACRM Searchable Online Program [ACRM.org/op](https://www.acrm.org/op)

### KEY

AN: Arts & Neuroscience ATH: Athlete Development & Rehabilitation BHS: Behavioral Health Sciences BI: Brain Injury Rehabilitation CAN: CANcer rehabilitation CROSS-CUTTING / CC: Spanning Diagnoses CIRM: Complementary, Integrative, Rehabilitation Medicine CP: Clinical Practice GER: Geriatric Rehabilitation HSR: Health Services Research INT: International LR: Limb Care LM: Lifestyle Medicine MEAS: MEASurement MIL: MILitary/veterans affairs ND: Neurodegenerative Disease (e.g. MS, Parkinson's disease) NP: NeuroPlasticity (includes neuroscience) PAIN: PAIN rehabilitation PED: PEDIatric rehabilitation QUAL: QUALity Improvement & Implementation Science RTS: Rehabilitation Research Specifications SCI: Spinal Cord Injury ST: Stroke Rehabilitation TEC: TEChnology (robotics, assistive technology, mHealth)

10:00 AM - 2:00 PM IC39 **Comprehensive Management of Head and Neck Cancer: Optimizing Outcomes Through a Multi-Disciplinary Approach** FOCUS: CAN, BHS, TEC FACULTY: Amanda Palmeri, Jonas Sokolof, Matina Balou, Holly Cohen, Tamar Press, Kenneth Hu

This course will provide a detailed overview on best treatment protocols across multiple rehabilitation disciplines including: Physiatry, physical therapy, occupational therapy, speech language pathology, and psychology. A radiation oncologist will explain treatment rationale for HNC and discuss new emerging treatments for sequelae from radiation. Participants will come away from this course understanding the unique impairments associated with head and neck cancer and its treatment along with the best treatment approach to help maximize function in this population. Register: [ACRM.org/ic39](https://www.acrm.org/ic39)

10:00 AM - 2:00 PM IC40 **Learn how Alexander Technique Interventions Can Complement and Enhance Rehabilitation Research and Interdisciplinary Clinical Practice** FOCUS: CIRM, ADSR, BI, CP FACULTY: Monika Gross

Alexander technique (AT) is a cognitive embodiment approach to increase client agency. Adapted Alexander-based programs teach clients how to choose functional patterns that result in more efficient use of postural muscles and improved overall postural tone during everyday activities. AT training increases client inhibitory control and their ability to transform stressful reactions into responses that create conditions for more positive rehabilitation outcomes and the likelihood of long-term retention of benefits. We will discuss how AT interventions are designed and implemented; the importance of improved proprioception and body schema for better client outcomes; training needed to become an AT specialist; the potential role of AT specialists in interdisciplinary care; and how AT can integrate into clinical rehab settings; and an overview of research on the clinical impact of AT interventions on target populations, and a discussion of the principles and current understandings of its mechanisms. Course includes experiential learning and Q&A. Register: [ACRM.org/ic40](https://www.acrm.org/ic40)

10:00 AM - 2:00 PM IC41 **Practice Skills for Rehabilitation Professionals Working With Refugees and Asylum Seekers** FOCUS: CP, INT FACULTY: Mansha Mirza, Temple Moore, Michel Landry, Mary Black, Jacob Bentley, Concettina Trimboli, Supriya Sen, Jade Elise Gross

Forced migration and displacement are at a record high. Refugees and asylum seekers are individuals with a history of displacement and are increasingly represented in rehabilitation practice. Many refugees and asylum seekers present with history of physical and mental trauma and have complex rehabilitation needs. It is important that rehabilitation providers be equipped to address the complex needs of this population using approaches that are trauma-informed, strength-based, and cognizant of their migration trajectories. This course will bring together an interdisciplinary team of experts to summarize relevant frameworks and treatment approaches to facilitate clinical care with this population as well as share successful programs for community rehabilitation and service-learning. Register: [ACRM.org/ic41](https://www.acrm.org/ic41)

10:00 AM - 2:00 PM IC42 **How to Effectively Use Secondary Data in Your Research Program** FOCUS: HSR FACULTY: Amol Karmarkar, James Graham, Matt Malcom

The workshop will advance participants' understanding of secondary data analysis. Secondary data is a broad term that covers two distinct categories: 1) data from prior research studies and 2) real-world administrative and outcomes data collected via daily operations and/or quality improvement initiatives. We will provide information on how to find and select secondary data related to one's topic of interest and tips and tricks for exploring and managing a novel data set. The format will include brief presentations and demonstrations followed by hands-on activities. The information provided will help investigators increase both the scope and impact of their research programs. Register: [ACRM.org/ic42](https://www.acrm.org/ic42)

10:00 AM - 2:00 PM IC44 **NIH Toolbox: Innovative Assessments for the Rehab** FOCUS: MEAS, BHS FACULTY: Julie Hook, Cindy Nowinski, Richard Gershon

This Introductory workshop presents instructional information and hands-on demonstration of the cutting edge measurement system to assess neurological and behavioral function - the NIH Toolbox®. The advantages of employing common measures across rehabilitation research and clinical practice will be addressed. Recent updates to the NIH Toolbox user interface and tests will be discussed. Participants will acquire the basics of computer adaptive testing and modern psychometric approaches and the building blocks for administration of the NIH Toolbox® measures for emotional, cognitive, sensory and motor function via an iPad. Register: [ACRM.org/ic44](https://www.acrm.org/ic44)

10:00 AM - 2:00 PM IC45 **Optimizing Upper Extremity Reconstruction After Spinal Cord Injury: An Interdisciplinary, Systematic, and Iterative Approach** FOCUS: SCI, CP, TEC FACULTY: Kyle Chepla, Anne Bryden, Michael Keith, Gina Kubec, Kevin Kilgore

In this course we will review how functional outcomes for patients with tetraplegia after SCI can be optimized using a systematic, interdisciplinary approach that focuses on early evaluation and detailed characterization of the injury, pre-operative therapy and splinting, timing and selection of surgical procedure(s) to meet the patient's goals and post-operative mobilization and retraining. Register: [ACRM.org/ic45](https://www.acrm.org/ic45)

10:00 AM - 2:00 PM IC46 **Functional Assessment and Prism Adaptation Treatment for Spatial Neglect after Stroke** FOCUS: ST, BI, CP FACULTY: Kimberly Hreha, Peii Chen

In this course we will review how functional outcomes for patients in this instructional course, we will first discuss the definition of spatial neglect and emphasize the clinical impact on stroke survivors. Next, we will explain the KF-NAP and offer participants the opportunity to practice using the assessment through access to patient cases via video. After, the KF-PAT will be introduced. Small groups will now learn to administer this treatment protocol by actually practicing with the equipment. Conclusions will be a discussion the practical implications of using both protocols in an inpatient rehabilitation facility. Register: [ACRM.org/ic46](https://www.acrm.org/ic46)

10:00 AM - 2:00 PM IC47 **Powering Forward: Wheelchair Setup and Skills for Power Wheelchair Users** FOCUS: TEC, BI, CP, GER FACULTY: Carrie Callahan, Rachel Hibbs, Lynn Worobey

The wheelchair is one of the most enabling technologies a clinician can provide. However, without proper selection and setup, the positive impact on quality of life can be compromised. In this hands-on workshop, you will learn the evidence behind key power wheelchair setup modifications and practice making these adjustments. Because wheelchair setup and wheelchair skills go hand-in-hand, we will follow adjustments with skills practice to understand the impact of adjustments and improve clinician ability to teach these skills to patients and clients. Hands-on practice will be complemented by discussion of case examples. Register: [ACRM.org/ic47](https://www.acrm.org/ic47)

**REGISTER TODAY**  
[ACRM.org/register](https://www.acrm.org/register)



# What they say...

2020 ACRM VIRTUAL Annual Conference attendees

ACRM  
Annual Conference

PROGRESS IN  
REHABILITATION RESEARCH  
TRANSLATION TO CLINICAL PRACTICE

I N T E R D I S C I P L I N A R Y

**I was highly impressed with the virtual format!** The platform was easy to navigate and I appreciated the ability to search by topic of interest and presentation type. In addition to the impressive lectures and comprehensive content, the opportunities to interact with the speakers and network with colleagues exceeded my expectations. **Excellent conference, ACRM!**

**BRIANNE DARCY**, PT, DPT, Clinical Research Manager, Moterum Technologies, Inc.

**ACRM is one of the best conferences to develop meaningful rehabilitation-related research collaborations**

**ABIODUN AKINWUNTAN**, PhD, MPH, MBA, FASAHP, Professor and Dean, University of Kansas School of Health Professions

**ACRM remains an indispensable part of my career** for new knowledge, new ideas, and opportunities for professional growth and development

**GERBEN DEJONG**, PhD, FACRM, Professor & Senior Fellow for Health Policy & Post-acute Care, Department of Rehabilitation Medicine, Georgetown University School of Medicine & MedStar National Rehabilitation Hospital, Washington, DC

"I have been practicing for 28 years and just attended ACRM for the first time, it was excellent and I am sorry that I have been missing out on this valuable learning opportunity."

—**DAWN PHILLIPS**, COTA, OT, Clinical Coordinator, TIRR Memorial Hermann

"Attending ACRM contributes significantly to the delivery of quality rehabilitation services based on research and quality."

—**SUE CHRISTENSEN**, MS, CTRS, Director, Therapy & Rehabilitation, Sanford Health

"As an early career rehabilitation researcher, I attend the ACRM conference because of its interdisciplinary perspective, emphasis on forward-thinking research methods and applications, and sense of community."

—**BROCHA Z. STERN**, PhD, OTR, Postdoctoral Fellow, Northwestern University Feinberg School of Medicine

"ACRM has become an important part of my professional community; I am grateful for the many opportunities to connect and collaborate with peers with similar interests from around the globe!"

—**INBAL ESHEL**, MA, CCC-SLP, Implementation Specialist, Defense Health Agency

"ACRM conference is the most reliable rehabilitation conference. Virtual conference is reliable, affordable and accessible for more professionals from all over the world."

—**DR. SITHU LYNN**, Physiatrist, Myanmar

"ACRM—THE most inclusive Conference in Rehabilitation area!"

—**EDUARDO M. C. ROCHA**, MD, Physiatrist, Rehabilitation Center of Santa Casa Sao Paulo, Brazil

"ACRM brings together the best rehabilitation researchers in the world to form collaborations and network with the leaders in your field."

—**MICHELE K. YORK**, Ph.D., ABPP-CN, FACRM, Professor, Baylor College of Medicine

## CALLING EXHIBITORS & SPONSORS

**PROSPECTUS**  
2021  
FOR THE VIRTUAL WORLD

GLOBAL ACCESS  
WITH ACRM  
REACH ALL OF THE  
REHAB TEAM

ACRM  
AMERICAN CONGRESS OF  
REHABILITATION MEDICINE

- ▶ Boost visibility
- ▶ Elevate results
- ▶ Improve more lives
- ▶ Align with ACRM

The world's largest  
interdisciplinary  
rehabilitation research event

[ACRM.org/sales](http://ACRM.org/sales)



## Early Bird rates\* end soon

- 4-HOUR Pre-Conference Instructional Course from \$169
- 2.5-DAY PRE-CON Instructional Courses Pass from \$279
- 3.5-DAY CORE Pass from \$399
- 6-DAY WORLD Pass from \$599

**REGISTER TODAY**  
ACRM.org/register

\*Pricing shown is USD for student/resident/fellow/consumer (non-professional caregiver). For all rates: ACRM.org/rates

**WORLD PASS SAVES YOU \$514 - \$948+**

## PASS COMPARISON

(Prices in parenthesis below indicate the Early Bird costs if purchased separately.)

	3.5 DAY CORE PASS	6-DAY WORLD PASS
	\$399 - 679	\$599 - 879
<b>CORE CONFERENCE</b> (\$349/one-day student - \$679/3.5 day professional)	✓	✓
Educational Symposia SUN – WED: <i>Hundreds of sessions &amp; lectures</i>	✓	✓
4 Plenary Sessions	✓	✓
Moderated Panel Discussions	✓	✓
Awards Lectures	✓	✓
Scientific Posters — <i>hundreds! Including Poster Grand Rounds</i>	✓	✓
ACRM Community Meetings: <i>Interdisciplinary Special Interest Groups (ISIGs), Networking Groups, Task Forces and Committees. A few are invitation only.</i>	✓	✓
<b>Henry B. Betts Awards Gala: TUE 28 September evening</b>	✓	✓
<b>CME/CEU credits</b>	✓	✓
<b>ACRM EXPO:</b>	✓	✓
Meet with Sponsors & Exhibitors—live interactions and video chat	✓	✓
Learning Center	✓	✓
<b>Virtual Social Networking</b>	✓	✓
<b>Community Meetings</b>	✓	✓
<b>PRE-CONFERENCE</b>		
<b>INSTRUCTIONAL COURSES</b> (\$169 - 349)	additional fee	✓
Early Career Development Course: SUN 26 Sept (\$349 - 449)	additional fee	✓
Leadership Development Course: SUN 26 Sept (\$349 - 449)	additional fee	✓
<b>Conference Slides / PDFs</b> <i>Digital access to all available symposia and pre-conference instructional course slide presentations (PDFs). A few content leaders elect not to have their slides available to attendees, therefore some sessions may not be included.</i>	3.5 days of courses	6-days of courses

\*PLEASE NOTE: The ACRM Cognitive Rehabilitation Training is NOT included in the WORLD PASS and is available for purchase separately.

# REGISTER

www.ACRM.org/register  
or call +1.703.435.5335





# THANK YOU SPONSORS, EXHIBITORS, ADVERTISERS & INSTITUTIONAL SUPPORTERS

AS OF 2 APR 2021



For information on sponsoring, exhibiting, advertising and institutional membership opportunities, please contact [sales@ACRM.org](mailto:sales@ACRM.org) or phone +1.703.435.5335 or use this form [ACRM.org/salesform](https://www.acrm.org/salesform).

**ACRM**  
98th Annual  
Conference  
**VIRTUAL**  
SEPTEMBER  
2021

PROGRESS IN REHABILITATION RESEARCH  
CORE CONFERENCE: 26 – 29 SEPT  
PRE-CON: 24 – 26 SEPT  
**2021**

#ACRM2021

**ACRM**  
AMERICAN CONGRESS OF REHABILITATION MEDICINE

[www.ACRM.ORG](http://www.ACRM.ORG) +1.703.435.5335