

ACRM Conference

ACRM 
DALLAS TX USA
HILTON ANATOLE **2018**
CORE CONFERENCE: 30 SEPT – 3 OCT
PRE-CONF: 28 – 30 SEPT

PROGRESS IN REHABILITATION RESEARCH #ACRM2018

all about the research bring research to practice faster >>>

BRAIN INJURY  SPINAL CORD INJURY  STROKE  CANCER  NEUROPLASTICITY  NEURODEGENERATIVE DISEASES  PAIN 

I N T E R D I S C I P L I N A R Y

welcome to ACRM



welcome all!

*Everyone is invited!
Researchers, clinicians,
consumers, family & caregivers*



92.3% recommend
this event



4 plenary sessions **24** special sessions

600+ scientific
papers &
posters



**powerhouse
speakers**

renowned names in rehab



**international content &
3,000+** attendees
*inter-professional
65+ countries represented*



250+
educational
sessions, symposia
& lectures



Earn up to
44.5

CME/CEUs
13 disciplines
ACRM.org/credits



dozens 
of community group meetings
Join, network, make your mark

ACRM 
95th Annual
Conference

**PROGRESS IN
REHABILITATION
RESEARCH**

TRANSLATION TO
CLINICAL PRACTICE



ACRM is fun



ACRM Membership Meeting at the Annual Conference ATLANTA 2017. A fun membership business meeting? You bet! It's all naturally fun at ACRM with this combination of great-hearted, passionate people dedicated to improving lives

40+ pre-conference courses
Come early & deep dive into hot topics
& earn max education credits
ACRM.org/preconference



<<< meet the editors



**luxury headquarters
& best hotel rate**

Book your room through ACRM & receive
BONUS in-room wifi & access to the world-
class health club — \$28/per night value
ACRM.org/hotel

value+ 
included with registration
Continuing education credits processing
& session slides (when available)



easy air access
Dallas is an international
hub with efficient air
travel into DFW and DAL



friendships 
life-long relationships &
collaborations are made here

144 networking
time
hours 

cooperative & inclusive



Your whole rehab team is welcome at ACRM

the research is here



shouldn't you & your team be here, too?

ACRM DALLAS

#ACRM2018

REGISTER

REGISTER NOW! Early Bird Rates

Join ACRM

Save the most by becoming an ACRM Member before you register. ACRM is a growing and vibrant interdisciplinary community offering outstanding opportunities to connect, learn and collaborate with colleagues from around the world. Members gain full access to 20+ interdisciplinary special interest groups, committees, task forces and networking groups, subscription to the *ARCHIVES of Physical Medicine & Rehabilitation* — the most-cited journal in rehabilitation, discounts on all ACRM events and publications and more. Visit ACRM.org/join or contact MemberServices@ACRM.org.

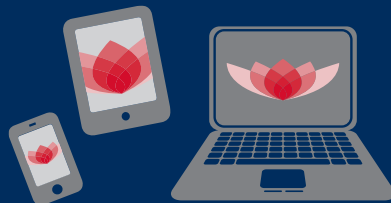
EARLY BIRD registration rates* from:

3.5 DAY CORE Pass from \$449

6 DAY Conference Pass from \$699

*Pricing shown is for student/resident/fellow/consumer (non-professional caregiver). For all rates: ACRM.org/rates.

***NEW! CME/CEUs and digital access to conference slides are now included in the price**



TOO MUCH TO PRINT!

<< All sessions & details are in the online program ACRM.org/onlineprogram



 #ACRM2018 @ACRMtweets

 LIKE & SHARE

TO REGISTER: www.ACRM.org/2018
or call +1.703.435.5335



ACRM 
95th Annual
Conference

**PROGRESS IN
REHABILITATION
RESEARCH**

TRANSLATION
TO CLINICAL
PRACTICE



INTERDISCIPLINARY

Improving lives
through interdisciplinary
rehabilitation research



ACRM HEADQUARTERS
11654 Plaza America Drive, Ste 535
Reston, Virginia, USA 20190
Tel: +1.703.435.5335
Email: info@ACRM.org

ACRM LEADERSHIP

PRESIDENT

Deborah Backus, PT, PhD,
FACRM

CHIEF EXECUTIVE OFFICER

Jon W. Lindberg, MBA, CAE,
Yale-GELP

www.ACRM.org

 @ACRMtweets



©2018 ACRM. All rights reserved.

www.ACRMconference.org



“ **Your research matters. And the world needs to know. Come to ACRM and share it!** ”

ACRM is a home where I can combine clinical interests with my research and interact with people who are making decisions about rehab research.

DEBORAH BACKUS, PT, PHD, FACRM

ACRM PRESIDENT

EULA C. AND ANDREW C. CARLOS MS REHABILITATION AND WELLNESS PROGRAM AT SHEPHERD CENTER



“ **This is going to be FANTASTIC. Tell your colleagues!** ”

You — and your entire rehab team — are welcome at ACRM. If you've been to a Conference before, it's like coming home. If you are new to ACRM, welcome to our family.

PAMELA ROBERTS, PHD, OTR/L, SCFES, FAOTA, CPHQ, FNAP, FACRM

STROKE INTERDISCIPLINARY SPECIAL INTEREST GROUP CHAIR AND ANNUAL CONFERENCE PROGRAM COMMITTEE CO-CHAIR

ACRM PRESIDENT-ELECT

CEDARS-SINAI HEALTH SYSTEM



“ **The ACRM Conference is well attended by leaders from all over the field in every discipline** ”

ACRM is a place where I can meet face-to-face with collaborators, meet new people, welcome new early career individuals into the fold, help educate and collaborate. ACRM is a GREAT place to be.

STEPHANIE KOLAKOWSKY-HAYNER, PHD, CBIST, FACRM

ANNUAL CONFERENCE PROGRAM COMMITTEE CO-CHAIR

ICAHN SCHOOL OF MEDICINE AT MOUNT SINAI



“ **ACRM has provided me with some of my most valued lifelong professional associations & friendships** ”

ACRM and the annual meeting provide the ideal venue for learning, contributing and networking, bringing together all the rehabilitation disciplines from around the world involved in rehabilitation research and clinician care. As a physician with interests spanning clinical care, research and promoting best practices in rehabilitation health care delivery, ACRM has been so valuable to me in developing and enriching my career, learning, teaching and connecting with colleagues.

DOUGLAS KATZ, MD, FACRM, FAAN, FANA, FASNR

ACRM PAST-PRESIDENT

BOSTON UNIVERSITY SCHOOL OF MEDICINE, BOSTON

UNIVERSITY NEUROLOGY ASSOCIATES, HEALTHSOUTH BRAINTREE REHABILITATION HOSPITAL

Although significant schedule changes are not anticipated, schedules, sessions and presenters are subject to change.

+1.703.435.5335

5



PROGRESS IN REHABILITATION RESEARCH #ACRM2018



ACRM

ACRM is an intensive 3.5 day conference — filled with the brightest in the field of physical rehabilitation.

ACRM has 20+ unique community groups where like-minded health care and research colleagues network, collaborate and pursue choice projects and product development initiatives that push the rehab field forward.

You are invited to join our meetings in Dallas. Join us. Be moved.



WHO ATTENDS

Everyone is welcome at ACRM — all rehabilitation professionals, administrators, researchers, clinicians, consumers, family members, and caregivers.

Here's just a sample of some of the more common attendee types:

- › Administrators
- › Athletic Trainers
- › Bioengineers
- › Biomechanists
- › Caregivers
- › Case Managers
- › Clinical Epidemiologists
- › Clinical Researchers
- › Family, Spouses/Partners
- › Movement and exercise specialists
- › Neurologists
- › Neuropsychologists
- › Neurosurgeons
- › Nurses
- › Occupational Therapists
- › Physiatrists
- › Physical Therapists
- › Physicians
- › Professors/Educators
- › Psychiatrists
- › Psychologists
- › Recreational Therapists
- › Rehabilitation Nurses
- › Rehabilitation Psychologists
- › Rehabilitation/Academic Researchers
- › School Administrators
- › School Nurses
- › Speech-Language Professionals
- › Students/Postdoctoral Fellows
- › Teachers
- › All members of the rehabilitation team
- › Those with disabling conditions and their families

The ACRM Annual Conference will challenge and inspire you to soak up the latest research & make a significant impact to help **IMPROVE LIVES.**

OUR ATTENDEES & FACULTY ARE FROM ORGS LIKE THESE:

- › ABI Rehabilitation
- › AbilityLab
- › ACOEM
- › Alta Bates Summit Medical Center
- › Amana Healthcare
- › Avanir Pharmaceuticals Inc.
- › Barrett Technology
- › Biodex Medical Systems, Inc.
- › Bitácora - Centro de Neuropsicología
- › Boston Medical Center
- › Brain Education Strategies & Technology
- › Brain Injury Research Center for Mount Sinai
- › Bright Cloud International Corp.
- › Brooks Rehabilitation
- › Bryan Health
- › California Rehabilitation Institute
- › CARF International
- › Casa Colina Hospital
- › Cedars-Sinai
- › Center for Large Data Research and Data Sharing in Rehabilitation
- › Centre for Neuro Skills
- › Children's Healthcare of Atlanta Rehabilitation Services
- › Children's Hospital of Alabama
- › Cleveland Clinic
- › Colorado State University
- › Courage Kenny Rehabilitation Institute, part of Allina Health
- › Craig Hospital
- › Dartmouth College
- › Department of Physical Medicine and Rehabilitation, Rush University Medical Center
- › Department of Rehabilitation Medicine at the Icahn School of Medicine at Mount Sinai
- › Duke University
- › Dynofit
- › Ekso Bionics®
- › Encompass Health
- › g.tec neurotechnology USA, Inc.
- › Galileo Therapy
- › George Mason University
- › George Washington University
- › Hanger Clinic
- › Harvard Medical School
- › HealthSouth Corporation
- › Helius Medical Technologies, Inc.
- › Hines VA Hospital
- › Hocoma/Motek
- › Hokuto Hospital / Tokachi Rehabilitation Center
- › Indiana University School of Medicine Department of Physical Medicine & Rehabilitation
- › JFK - Johnson Rehabilitation Institute
- › Johns Hopkins Hospital
- › Kennedy Krieger Institute
- › Kent State University
- › Kessler Foundation
- › Kessler Institute for Rehabilitation
- › King Fahad Medical City
- › Mary Free Bed Rehabilitation Hospital
- › Mayo Clinic
- › McMaster University
- › MD Anderson Cancer Center
- › Merz Neurosciences
- › Michigan State University
- › Model Systems Knowledge Translation Center (MSKTC)
- › Moss Rehabilitation Research Institute
- › Motekforce Link BV
- › Mount Sinai Medical Center
- › Myomo Inc.
- › National Stroke Association
- › Neofect
- › NEOFECT USA, Inc.
- › NeuroRestorative
- › NIH MR3 Network
- › NIH/NINDS
- › Northwestern University
- › Ohio State University Wexner Medical Center
- › Paradigm
- › Paralyzed Veterans of America
- › Parker Hannifin
- › Parkinson's Disease Foundation
- › Pate Rehabilitation
- › Penn State College of Medicine
- › Physiofunction
- › ProtoKinetics Gait Analysis Walkways
- › Purdue University
- › Quality Living Inc.
- › Rehab Associates of Chicago
- › Rehab Without Walls NeuroSolutions
- › Rehabilitation Hospital of Indiana
- › Rehabilitation Sciences Institute, University of Toronto
- › Restorative Therapies Inc.
- › ReWalk Robotics
- › Rifton
- › Rusk Rehabilitation at NYU Langone
- › Samsung Medical Center
- › Santa Clara Valley Medical Center
- › Saol Therapeutics
- › Seattle Children's Hospital
- › Seton Hall University
- › Shepherd Center
- › Spaulding Rehabilitation Hospital
- › Spectrum Health NeuroRehab Services
- › St. Mary's Hospital for Children
- › StepScan Technologies Inc.
- › Sultan bin Abdulaziz Humanitarian City
- › Sunnaas Rehabilitation Hospital
- › Swedish Cancer Institute
- › Taipei Veterans General Hospital
- › Tekscan, Inc.
- › Tennessee State University
- › The Amputee Coalition
- › The Brain Injury Rehabilitation Center
- › The Mind-Eye Connection
- › The Ohio State University
- › The University of Texas MD Anderson Cancer Center
- › TIRR Memorial Hermann
- › Tree of Life and Concussion Care Centre of Virginia
- › UAB Department of Physical Medicine & Rehabilitation
- › UCLA
- › UHN Toronto Rehab, University of Toronto
- › Umea University, Sweden
- › University of Alabama at Birmingham
- › University of Calgary
- › University of California
- › University of Colorado Anschutz Medical Campus
- › University of Cyprus
- › University of Delaware
- › University of Florida
- › University of Illinois
- › University of Illinois at Chicago
- › University of Oregon
- › University of Toronto
- › University of Virginia
- › University of Wisconsin
- › VA Boston Healthcare System
- › VA Palo Alto
- › Vanderbilt University
- › Veteran Affairs — dozens more offices
- › Virginia Commonwealth University
- › Washington University
- › Weill Cornell Medical College
- › Wesleyan University
- › West Virginia University
- › Youngstown State University
- › **and hundreds more...**

What they say...



DEBORAH BACKUS, PT, PHD, FACRM
ACRM President

Director, Multiple Sclerosis Research at Shepherd Center, Eula C. and Andrew C. Carlos MS Rehabilitation and Wellness Program at Shepherd Center

"I've been a member of ACRM since 2004. It's been my professional home because of its vision and mission to help all people with disabilities and because of the interdisciplinary nature, we cross all disciplines and we combine research and we combine clinical practice, and we are using it all together to make a difference in the lives of people with disability.

Have you registered yet for ACRM in Dallas? We need your research, we need your brain, and we need your passion. Have you talked to your friends about ACRM yet? Have you told them about the passion and the motivation and the work that people are doing here?

Your research matters, and the world needs to know. Come to ACRM and share it."

ACRM.org/president



MONIQUE PAPPADIS, MED PHD
University of Texas Medical Branch at Galveston

KRISTINE KINGSLEY, PSYD, ABPP-R
Rusk Rehabilitation at NYU Langone Medical Center

"I think ACRM is a great place for early career rehabilitation professionals to network, to be involved in projects and to improve their career in rehab. I love the opportunities and making friendships with so many individuals from all over the US and internationally." —*Monique*

"I feel great to be at ACRM. It's a great place to meet not just colleagues but also family." —*Kristine*

ACRM.org/friends

"ACRM is a great organization for early career professionals to advance their career with limitless networking opportunities."



PRESTON HARLEY, PHD, FACRM
Director, Neuropsychology, Advocate Christ Medical Center, Chicago, IL

"This is an incredible bunch of professionals, who are working together in rehabilitation. ACRM is a totally unique organization. I belong to a lot of national and international organizations, but ACRM is different because it provides an opportunity to interact with with physicians, psychologists, physical therapists, occupational therapists, and speech pathologists.

The best part about ACRM is the provision of knowledge and cutting-edge research, and the collegial interactions of all of the individuals who attend."

ACRM.org/harley

"ACRM is a totally unique organization."



ACRM.org/call

Session & faculty Details in Searchable Online Program
ACRM.org/onlineprogram



All together we IMPROVE LIVES



STEPHANIE KOLAKOWSKY-HAYNER, PHD, CBIST, FACRM
ACRM Program Committee
Co-Chair

Associate Professor of Rehabilitation Medicine, Icahn School of Medicine at Mount Sinai

“ACRM is a place where I can interact with people from all over the world, come face-to-face with collaborators, meet new people, welcome early career individuals, help educate, and collaborate. ACRM is a GREAT place to be.”

ACRM.org/stephanie

“The ACRM Conference is well attended by leaders from all over the field in every discipline”



STEPHEN PAGE, PHD, OTR/L, MS, MOT, FAHA, FACRM, FAOTA
Professor, Ohio State University
Medical Center

“ACRM is like a little big town. It’s still small and intimate enough that you can get to know people who are leaders in the field, and its large enough that its populated by a lot of diverse groups — a lot of people with diversity in training. And that offers up a lot of opportunities for career mentoring.

We are one of the few organizations in the rehabilitative field that offers career mentoring, early career programming, and even offers opportunities to learn about how to publish in our journal, how to structure grants, structure abstracts.

That kind of mentoring just doesn’t exist in other professional organizations that are appropriately focused on clinical practice but not focused on rehabilitation research.

And that’s why ACRM is the world’s largest interdisciplinary rehabilitation research organization.”

ACRM.org/page



THERESA PAPE, DRPH MA CCC-SLP/L
Neuroscientist, Clinical Neuroscientist and Research Associate Professor, US Department of Veteran’s Affairs, Hines VA and Northwestern Feinberg School of Medicine

“ACRM is my professional community. It’s the organization where I found the most collaborators with interdisciplinary expertise. I can easily work with measurement experts as well as neurologists and clinicians, other key methods people and others who I need to work with in order to conduct my clinical trials.

We would LOVE to have your proposal submissions for 2018 in Dallas.

Maybe you developed a new method, or you’re an early career person and you’ve developed a new method — we would love to see your posters & your papers submitted.”

ACRM.org/pape

Early bird rates now in progress.
Secure your spot. REGISTER >>
[ACRM.org/register](https://www.acrm.org/register)



network > collaborate > improve > #ACRM2018

Early Career Development Course

SUNDAY 30 SEPT 2018
8:00 AM - 3:00 PM

“Pearls, Possibilities & Pitfalls: Writing Successful Grants and Manuscript Submissions”



Held the day the CORE Conference kicks-off, the **Early Career Development Course** is a perennial favorite.

This unique session is incredibly valuable because early career researchers are directly connected with seasoned professionals who serve as mentors and answer specific questions — from career development to funding opportunities, among other burning topics.



KEYNOTE SPEAKER ALLEN HEINEMANN,

PHD, ABPP, Editor-in-Chief *ARCHIVES of Physical Medicine & Rehabilitation*, Professor of Physical Medicine and Rehabilitation, Emergency Medicine and Medical Social Sciences, Northwestern University.

WHO SHOULD ATTEND?

Early career researchers, clinician scientists, and clinicians interested in starting a research agenda will find the course especially beneficial. Attendees range from graduate students nearing the completion of their degree, to postdoctoral scholars and junior faculty. The course program changes annually, enabling attendees to enjoy a unique and informative experience year after year.



Make your own great story.

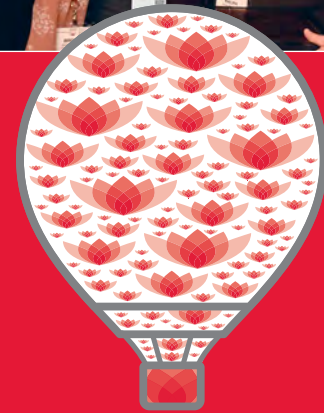
Turbo-charge your career here.



...the best advice you've not yet heard. Don't miss this career lifting experience



This course is arranged by the ACRM Early Career Networking Group: ACRM.org/earlycareer



LIMITED SPACE REGISTER NOW >>>

SEE DETAILS, AGENDA & REGISTER
www.ACRM.org/ecdc



Powerhouse Presenters...



PLENARY I ERWIN E. H. VAN WEGEN, PHD

Associate Prof.,
Amsterdam
University

Moving From Clinician Centered Towards Patient Engaged Rehab Research: European and USA Comparisons



PLENARY II KIRK I. ERICKSON, PHD

Professor, Dept of
Psychology, Univ.
of Pittsburgh

Aging, Exercise & Brain Plasticity



PLENARY III SAM SCHMIDT, MBA

Schmidt Petersen
Motorsports;
Founder, Conquer
Paralysis Now

Breaking Barriers: Sam Schmidt & the SAM Car Project



PLENARY IV

MARK S. NASH, PHD, FACSM, Professor, Depts of Neurological Surgery & Physical Medicine & Rehabilitation, Leonard M. Miller School of Medicine, Univ. of Miami



"Disparities Of Cardiometabolic Risk Assessment And Intervention In Persons With Disabilities: At The Fork In The Road?"

FEATURED SESSION



Teaching Kitchens as Learning Laboratories for Rehab Patients & Their Medical Providers

DAVID EISENBERG, MD

Director of Culinary Nutrition
Adjunct Associate Professor, Dept. of
Nutrition Harvard T.H. Chan School
of Public Health

SPECIAL SYMPOSIUM: NEURODEGENERATIVE DISEASE



JAMES CAROLLO, PHD, PE

Associate Professor,
University of Colorado
Anschutz Medical
Campus



PATRICIA HEYN, PHD, FGSA, FACRM

Associate Professor, Univ. of
Colorado Anschutz Medical Campus. *Photo below*



MELIKE KAHYA, PT, MS

Graduate Research
Assistant, University
of Kansas Medical
Center



HANNES DEVOS, PHD, DRS

Director, Laboratory
for Advanced Rehab.
Research in Simulation
(LARRS), University of
Kansas Medical Center

SPECIAL SYMPOSIUM: CANCER

Report from the American College of Sports Medicine's Interdisciplinary Cancer Exercise Roundtable



NICOLE STOUT, PT, DPT, CLT-LANA, FAPTA

Consultant,
3eServicesLLC



JULIE SILVER, MD Associate Professor, Assoc. Chair, Director Cancer Rehabilitation, Harvard Medical School & Spaulding Rehabilitation Network. *Photo below left.*



CATHERINE ALFANO, PHD

Vice President,
Survivorship, American
Cancer Society, Inc



ANDREA CHEVILLE, MD

Director Cancer
Rehabilitation, Mayo
Clinic

SPECIAL SYMPOSIUM: MEASUREMENT



Big Data in Stroke: Current Applications and Future Possibilities

KENNETH OTTENBACHER, PHD, OTR

Professor, Director,
University of Texas Medical Branch
Public Health

SPECIAL SYMPOSIUM: SPINAL CORD INJURY



Health Care Reform and Rehabilitation for People with SCI

GERBEN DEJONG, PHD

Director of the Center for Post-acute Innovation and Research at the MedStar National Rehabilitation Network

SPECIAL SYMPOSIUM: CROSS-CUTTING

Treatment Infidelity: Causes, Consequences & Cures



GITENDRA USWATTE, PHD

Professor of
Psychology and
Physical Therapy,
University of Alabama
at Birmingham



TESSA HART, PHD

Institute Scientist;
Director, TBI Clinical
Research Laboratory, Moss
Rehabilitation Research
Institute

SPECIAL SYMPOSIUM: CROSS-CUTTING

2nd Annual Women in Rehabilitation Science Symposium



MARK HIRSCH, PHD

Senior Scientist,
Carolinas Medical
Center, Carolinas
HealthCare System



JULIE SILVER, MD

Associate Professor,
Associate Chair, Director
Cancer Rehabilitation,
Harvard Medical School
& Spaulding Rehabilitation
Network



SONYA KIM, PHD, CRC, BCB

Assist. Prof., Research
Scientist, NYU
School of Medicine
Dept of Neurology &
Rehabilitation



DOUGLAS KATZ, MD

Professor / Medical
Director, Boston
University /
Braintree Rehab



PATRICIA HEYN, PHD, FGSA, FACRM

Associate Professor, Univ.
of Colorado Anschutz
Medical Campus



ARZU GUCLU-GUNDUZ, PT, PHD

Associate Professor, Gazi
University, Institute of
Health Sciences

SPECIAL SYMPOSIUM: TECHNOLOGY

Development and Testing of Wearable Technology to Monitor/Model for Recovery of Function After Neurologic Injury



DAVID REINKENSMAYER, PHD
Professor of Mechanical and Aerospace Engineering and Anatomy and Neurobiology, University of California Irvine



CATHERINE LANG, PT, PHD
Professor of Physical Therapy, Neurology, Occupational Therapy, Washington University School of Medicine in St. Louis

BRUCKER SPECIAL SYMPOSIUM

Ears, Eyes and Mind: The SENSE-Cog Project to Promote Well-Being for Elderly Europeans



IRACEMA LEROI, MD FRCP, MRCPSYCH
Professor/Honorary Consultant in Psychiatry, University of Manchester/Greater Manchester Mental Health & NHS Foundation Trust

SPECIAL SYMPOSIUM: COMPLEMENTARY INTEGRATIVE REHABILITATION MEDICINE

Heart Rate Variability Biofeedback as a Rehabilitation Tool: An Exercise that Improves Health and Resilience



PAUL LEHRER, PHD, BCB, Professor Emeritus of Psychiatry, Department of Psychiatry, Rutgers Robert Wood Johnson Medical School

SPECIAL SYMPOSIUM: NEUROPLASTICITY

Closed-loop Stimulation of Temporal Cortex Improves Memory



YOUSSEF EZZYAT, PHD, Senior Data Scientist, University of Pennsylvania

SPECIAL SYMPOSIUM: STROKE

Transforming Clinical Practice in Stroke Rehabilitation



ROBERT TEASELL, MD, FRCP (C)
Professor, Director of Research, Parkwood Institute

SPECIAL SYMPOSIUM: HEALTH SERVICES RESEARCH: QUALITY IMPROVEMENT AND IMPLEMENTATION SCIENCE

Post-acute Health Services Research: Many Challenges, Many More Opportunities



JAMES GRAHAM, PHD, DC
Associate Professor, University of Texas Medical Branch



AMOL KARMARKAR, PHD
Assistant Professor, University of Texas Medical Branch



KENNETH OTTENBACHER, PHD, OTR, Professor, Director, University of Texas Medical Branch Public Health



TRACY MROZ, PHD, OTR/L, Assistant Professor, University of Washington



NATALIE LELAND, PHD, OTR/L, BCG, FAOTA
Assistant Professor, University of Southern California



JANET PRVU BETTGER, SCD
Associate Professor, Director of Health Policy and Implementation Science, Duke University

NEURODEGENERATIVE DISEASES LECTURE LUNCHEON

Fit Body, Fit Brain: Exercise is the Key



KIRK ERICKSON, PHD
Professor, Department of Psychology, University of Pittsburgh

ACRM DISTINGUISHED LECTURER IN CANCER REHABILITATION AND SURVIVORSHIP CARE

Integrating Research, Practice and Policy Agendas to Transform Cancer Rehabilitation Care



CATHERINE ALFANO, PHD
Vice President, Survivorship, American Cancer Society, Inc

HOT TOPICS IN STROKE

Stroke Caregiver Readiness: Coming Full Circle



BARBARA LUTZ, PHD, RN, CRRN, PHNA-BC, FAHA, FNAP, FAAN
McNeill Distinguished Professor, University of North Carolina-Wilmington



MOLLY TRAMMELL, PT, MPT
Physical Therapist, Baylor University

Be part of this faculty

AMP UP your research

Call for Paper & Poster Proposals!
Deadlines soon...

www.ACRM.org/call

Questions? Call: +1.703.435.5335

ACRM 
95th Annual Conference

PROGRESS IN REHABILITATION RESEARCH

TRANSLATION TO CLINICAL PRACTICE





PROGRESS IN REHABILITATION RESEARCH

TRANSLATION TO CLINICAL PRACTICE



NONSTOP CONTENT: Brain Injury • Spinal Cord Injury • Stroke • Neuroplasticity • Cancer Rehabilitation • Neurodegenerative Diseases • Pain • Health/Disability Policy • International • Measurement • Military/Veterans Affairs • Pediatric Rehabilitation • Geriatric Rehabilitation • Technology • Limb Loss Rehabilitation • Lifestyle Medicine • Arts & Neuroscience • Complementary Integrative Rehabilitation Medicine • Clinical Practice • Cross-Cutting **INTERDISCIPLINARY**

FRI 28 SEPT	SAT 29 SEPT	SUN 30 SEPT	MON 1 OCT	TUE 2 OCT	WED 3 OCT
-----------------------	-----------------------	-----------------------	---------------------	---------------------	---------------------

PRE-CONFERENCE / **CORE CONFERENCE**

Instructional Courses Choose from a variety of half-day and full-day courses ACRM COGNITIVE REHABILITATION TRAINING TWO-DAY COURSE ACRM.org/cog OFFICIAL ACBIS CERTIFICATION COURSE FOR BRAIN INJURY SPECIALISTS TWO-DAY COURSE ACRM.org/acbis	Instructional Courses Choose from a variety of half-day and full-day courses ACRM COGNITIVE REHABILITATION TRAINING TWO-DAY COURSE ACRM.org/cog OFFICIAL ACBIS CERTIFICATION COURSE FOR BRAIN INJURY SPECIALISTS TWO-DAY COURSE ACRM.org/acbis	ACRM Early Career Development Course (lunch included) INCLUDED in WORLD PASS Limited space The best advice you've not yet heard! ACRM.org/ecdc	Instructional Courses Variety of half-day morning course options ACRM Community Group Meetings CORE START 1:30 PM CONCURRENT SESSIONS BLOCK I SPONSORED SYMPOSIA TBD	ACRM Community Group Meetings PLENARY II EXPO: Coffee Break / Product Theater / Chat with Experts CONCURRENT SESSIONS BLOCK 2 LUNCHEON LECTURES EXPO: Product Theater / Chat with Experts / Lunch for purchase in EXPO CONCURRENT SESSIONS BLOCK 3 Poster Grand Rounds Poster Viewing EXPO: Product Theater / Chat with Experts CONCURRENT SESSIONS BLOCK 4 EXPO RECEPTION II / Product Theater	ACRM Community Group Meetings PLENARY III EXPO: Coffee Break / Product Theater / Chat with Experts CONCURRENT SESSIONS BLOCK 5 LUNCHEON LECTURES EXPO: Product Theater / Chat with Experts / Lunch for purchase in EXPO Poster Grand Rounds / Product Theater CONCURRENT SESSIONS BLOCK 6 ACRM Community Group Meetings / Paper Sessions ACRM Membership Meeting OPEN to ALL Pre-Gala Cocktail Hour OPEN to ALL Henry B. Betts Awards Dinner & Gala	ACRM Community Group Meetings FEATURED SESSIONS: Funders & Physical Fitness CONCURRENT SESSIONS BLOCK 7 CONCURRENT SESSIONS BLOCK 8 CONCURRENT SESSIONS BLOCK 9 CLOSING PLENARY IV Arts & Neuroscience: Ending on a High Note CORE END 4:00 PM OPTIONAL SOCIAL DINNERS, NETWORKING & FUN ON YOUR OWN
				WELCOME REMARKS & PLENARY I ACRM EXPO OPENING RECEPTION I	EARLY CAREER & FIRST-TIME ATTENDEE WELCOME to ACRM OPEN to ALL	ACRM EXPO OPENING RECEPTION I

Conference activities start as early as 7:00 AM and may run as late as 9:00 PM

#ACRM2018

- KEY**
- = CORE Educational Sessions
 - = ACRM EXPO & Posters
 - = Receptions: networking + fun
 - = ACRM Community Group Meetings
 - = Pre-Conference Instructional Courses & Workshops

CONFERENCE HEADQUARTERS HOTEL
 HILTON ANATOLE 2201 Stemmons Freeway, Dallas, Texas, USA



ACRM SPECIAL DISCOUNTED RATES:

- » \$219/night for standard room plus taxes
- » \$142/night for government room plus taxes
- » Book using the link here: ACRM.org/hotel

Or call: 1-800-955-4281. When calling, be sure to use these group codes "ACM" or for government rate: "2AC"



CME / CEUs

...Come & get 'em

EARN UP
TO **44.5**
CREDITS!



OFFERING CME / CEUs FOR 13 DISCIPLINES

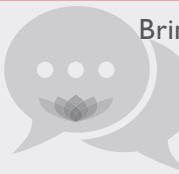
1) Certified Case Managers (CCMC), **2)** Disability Management Specialists (CDMS), **3)** Healthcare Executives (ACHE), **4)** Massage Therapists (NCBTMB), **5)** Nurses (ANCC), **6)** Occupational Therapists (AOTA), **7)** Physical Therapists (FSBPT, and other states), **8)** Physicians (ACCME), **9)** Registered Dietitians (CDR), **10)** Rehabilitation Counselors (CRCC), **11)** Rehabilitation Psychologist (APA), **12)** Social Workers (NASW), **13)** Speech-Language-Hearing Therapists (ASHA)

www.ACRM.org/credits



**ACRM
EXPO**

**“CHAT with
the EXPERTS”**



Bring your questions / find your answers here...

**UP-CLOSE NETWORKING &
EXCHANGES at ACRM EXPO**

www.ACRM.org/chatwithexperts





The ACRM PRE-CONFERENCE PROGRAM is comprised of longer courses, workshops, and training to help you dive deep into special interest topics and pile on the maximum continuing education credits — up to 44.5 hours available for the whole ACRM WEEK. **All courses on this page are INCLUDED in the WORLD PASS.** Continuing education credits and conference slides are included. *These events will likely sell-out — REGISTER TODAY >>> ACRM.org/register*

	TIME	ID CODE	FRIDAY 28 SEPT	TOPICS
AM	8:30 AM - 12:30 PM	IC1	Regenerative Medicine in Conjunction w/ Traditional Therapy in Treatment of TMD & Related Dys... #423223	CP CIRM PAIN
FULL DAY	8:30 AM - 5:30 PM	IC2	Coping-Skills Training Workshop: A Group Intervention Aimed to Improve Adjustment after BI #418595	BRAIN INJURY CP
	8:30 AM - 5:30 PM	IC3	Interdisciplinary Perspectives to Functional Measurement and Assessment of the Stroke Survivor #418615	STROKE MES
	8:30 AM - 5:30 PM	IC34	Measuring Up: An Introduction to Improving the Meaning of Clinical Assessments w/ Rasch Analysis #431732	MEASUREMENT
PM	1:30 PM - 5:30 PM	IC4	Strength & Neuromuscular Conditioning for Rehabilitation; the Fundamental Principles to Optimise Outcomes	CP CROSS-CUTTING

SATURDAY 29 SEPT

AM	8:30 AM - 12:30 PM	IC5	Approaches to Interdisciplinary Care in the PostAcute Setting #401716	CP HSR MES
	8:30 AM - 12:30 PM	IC6	Kinesio Taping Hands-on Workshop #415461	CIRM CP
	8:30 AM - 12:30 PM	IC7	Restoring Voluntary Grasping Function After Stroke or Spinal Cord Injury Using Functional Electrical Stimulation #418020	NP SCI STROKE
FULL DAY COURSES	8:30 AM - 5:30 PM	IC8	Advanced Topics in Longitudinal Data Analysis #417908	MES CROSS-CUTTING
	8:30 AM - 5:30 PM	IC9	Elevating Your Scientific Writing Prowess and Your Research Profile #408897	CROSS-CUTTING QUAL
	8:30 AM - 5:30 PM	IC10	Holistic Neuropsychological Rehabilitation International Updates, Debates and Resources #424976	BRAIN INJURY INT
	8:30 AM - 5:30 PM	IC11	Integrative Cognitive Rehabilitation Psychotherapy for Brain Injury An Overview #419019	BRAIN INJURY PED NP
	8:30 AM - 5:30 PM	IC12	Integrating Outcome Measurement into Clinical Practice #417442	CP CROSS-CUTTING
	8:30 AM - 5:30 PM	IC13	Latest Assessment and Treatment for Stroke, TBI and SCI to Accelerate Neurorehabilitation #416223	CP NP SCI
	8:30 AM - 5:30 PM	IC14	Navigating Strengths in Interdisciplinary Teams: A Look in the Mirror #428696	CROSS-CUTTING INT
	8:30 AM - 5:30 PM	IC16	Using Smartphone Apps as a Brain Prosthetic for Patients w/ Cognitive Challenges & Fatigue #418892	TEC BRAIN INJURY MIL
	8:30 AM - 5:30 PM	IC33	Manual Wheelchair Skills Assessment and Training: A Practical Workshop for Therapists #418680	CROSS-CUTTING SCI CP
	PM	1:30 PM - 5:30 PM	IC17	How Alexander Technique Can Complement Rehabilitation Research and Practice #418878
1:30 PM - 5:30 PM		IC18	How to Contribute to and/or Lead Clinical Research as a Physician or Rehabilitation Clinician #418014	CROSS-CUTTING CP
1:30 PM - 5:30 PM		IC19	Matching Exercise Prescription to the Biomechanics of Walking in Rehabilitation to Optimise Mobility Outcomes #418556	CP LIMB RESTORATION CROSS-CUTTING

SUNDAY 30 SEPT MORNING ONLY COURSES

MORNING COURSES	\$ 8:00 AM - 3:00 PM	Early Career Development COURSE LUNCH INCLUDED see: ACRM.org/ecdc		
	8:30 AM - 12:30 PM	IC15	Optimizing Outcomes in Wheelchair Skills & Maintenance Training Through Group & Remote Training #418612	CROSS-CUTTING CP SCI
	8:30 AM - 12:30 PM	IC20	Education is not Enough: A Guide to Implementing ACRM Cognitive Rehabilitation Manual at Organizational Level #408470	CP BRAIN INJURY QUAL
	8:30 AM - 12:30 PM	IC21	Evaluating Evidence in Everyday Clinical Practice #428677	CP
	8:30 AM - 12:30 PM	IC22	Evaluation and Treatment for Chemotherapy-Induced Peripheral Neuropathy #416168	CAN CP
	8:30 AM - 12:30 PM	IC23	How to Find and Access Secondary Data for Your Research #415380	CROSS-CUTTING STROKE GER
	8:30 AM - 12:30 PM	IC24	I Survived Critical Illness — Now What? Post-Intensive Care Syndrome Prevention, Identification, and Treatment #426551	CP CAN
	8:30 AM - 12:30 PM	IC25	Interprofessional Care for the Chronic Pain Population: Lessons From an Interdisciplinary Rehabilitation Program #416860	PAIN CP PED
	8:30 AM - 12:30 PM	IC26	Item Response Theory (IRT) and Its Applications to Rehabilitation Outcomes Assessment #417996	MEASUREMENT CP QUAL
	8:30 AM - 12:30 PM	IC27	Multidisciplinary Treatment: An Innovative Approach to Facial Palsy #418685	CIRM CP INT
	8:30 AM - 12:30 PM	IC28	Novel BCI Approaches Boosting Neuroplasticity After Stroke and Providing Fast Objective Assessment in DOC Patients #436368	NP STROKE CROSS-CUTTING TEC
	8:30 AM - 12:30 PM	IC29	Rhythm and the Motor System: New Opportunities for Gait Training #415010	AN NP CROSS-CUTTING
	8:30 AM - 12:30 PM	IC30	Stimulation Paradigms and Parameters After Spinal Cord Injury #414830	SCI CP CIRM
	8:30 AM - 12:30 PM	IC31	The NIH Toolbox: State of the Art Outcome Measures for Rehabilitation Practice & Research #418753	CROSS-CUTTING MES
	8:30 AM - 12:30 PM	IC32	User Centered Design of Technologies for Rehabilitation: A Discussion and Demonstration #412655	TEC CROSS-CUTTING

KEY

AN: Arts & Neuroscience BI: Brain Injury CAN: CANcer rehabilitation CC: Cross-Cutting CIRM: Complementary, Integrative, Rehabilitation Medicine CP: Clinical Practice
 GER: GERiatric Rehabilitation HSR: Health Services Research INT: INTernational LRR: Limb Restoration Rehabilitation LM: Lifestyle Medicine MES: MEasurement
 MIL: MILitary/veterans affairs ND: Neurodegenerative Diseases NP: NeuroPlasticity (includes neuroscience) PAIN: PAIN rehabilitation PED: PEdiatric rehabilitation
 QUAL: QUALity Improvement & Implementation Science SCI: Spinal Cord Injury ST: STroke TEC: TEChnology (robotics, assistive technology, mHealth)

\$ While this course is included in the WORLD PASS, this incredible Early Career course includes networking box lunch and has a separate pricing structure when purchased a la carte.



DESCRIPTIONS

FRIDAY 28 SEPT

FRI 8:30 AM - 12:30 PM ICI: Regenerative Medicine in Conjunction with Traditional Therapy in the Treatment of TMD & Related Dysfunctions **STYLE:** Lecture **FOCUS:** Clinical Practice, Complementary

Integrative Rehabilitation Medicine, Pain Rehabilitation **FACULTY:** Jodi Barth, Center for Facial Recovery; Nathan Yokel, Regenerative Orthopedic and Sports Medicine; Gincy Stezar, The Center for Facial Recovery; Carl Chua, Center for Facial Recovery

Neck pain may signal a shoulder problem, and visa-versa. But have you ever considered how the TMJ region can also be a cause for symptoms? It's the purpose of this course to familiarize the clinician with basic evaluation techniques and the complex anatomical relationships between the cervical region, shoulder girdle and the craniomandibular complex that impact the successful resolution of symptoms. Current treatment regimens from a multi-disciplinary approach including PM&R regenerative techniques and new treatment modalities will be presented including the use of diagnostic ultrasound and negative pressure pump for assessment and treatment of fascial restrictions that impact this region.

FRI 8:30 AM - 5:30 PM IC2: Coping-Skills Training Workshop: A Group Intervention Aimed to Improve Adjustment after BI

STYLE: Hands-on Workshop **FOCUS:** Brain Injury, Clinical Practice **FACULTY:** Samantha Backhaus, Rehabilitation Hospital of Indiana; Summer Ibarra, Rehabilitation Hospital of Indiana; Thomas Bergquist, Mayo Clinic; Kamini Krishnan, Mayo Clinic

The focus of this workshop is to provide training in how to facilitate an evidenced-based coping skills group for individuals with brain injury and their caregivers. It will specifically review the different Modules of the program, teach participants advanced cognitive-behavioral, dialectical-behavioral, and Mindfulness skills and demonstrate application of group therapy skills. While the developers of this program will be teaching this workshop, prior workshop attendees from the Mayo Brain Rehabilitation Clinic will be discussing real-life application of this program.

FRI 8:30 AM - 5:30 PM IC3: Interdisciplinary Perspectives to Functional Measurement and Assessment of the Stroke Survivor

STYLE: Hands-on Workshop **FOCUS:** Stroke, Measurement **FACULTY:** Stephen Page, Ohio State University College of Medicine; Michelle Armour, Marianjoy Rehabilitation Hospital; Maria Cecilia Alpasan, Cedars-Sinai

Stroke is one of the leading causes of disability in the United States. Given stroke can affect all aspects of bodily function and abilities, multiple measurements and assessments are administered across disciplines. These measurements are critical in evaluating function and providing effective care for the stroke survivor. Clinical knowledge of various standardized assessments is required of all medical professionals to create effective goals for stroke patients to achieve functional outcomes.

FRI 1:30 PM - 5:30 PM IC34: Measuring Up: An Introduction to Improving the Meaning of Clinical Assessments w/ Rasch Analysis

STYLE: Workshop **FOCUS:** Measurement **FACULTY:** Trudy Mallinson, The George Washington University

A one day evidence-based workshop exploring the fundamentals of strength and neuromuscular conditioning within rehabilitation settings. Suitable for any rehabilitation professional. We will evaluate how the advances in science, including the cross-education effect and non-concurrent conditioning improves outcomes for little or no extra time or cost. Accordingly you will learn immediately deployable skills and techniques to enhance your clinical rehabilitation practice and the subtle, but important changes that can translate into big gains for your patients.

FRI 1:30 PM - 5:30 PM IC4: Strength & Neuromuscular Conditioning for Rehab.; Fundamental Principles to Optimise Outcomes

STYLE: Workshop with Discussion and Group Work **FOCUS:** Clinical Practice, Cross-Cutting **FACULTY:** Claire Minshull, RJAH Orthopaedic Hospital

A one day evidence-based workshop exploring the fundamentals of strength and neuromuscular conditioning within rehabilitation settings. Suitable for any rehabilitation professional. We will evaluate how the advances in science, including the cross-education effect and non-concurrent conditioning improves outcomes for little or no extra time or cost. Accordingly you will learn immediately deployable skills and techniques to enhance your clinical rehabilitation practice and the subtle, but important changes that can translate into big gains for your patients.

SATURDAY 29 SEPT

SAT 8:30 AM - 12:30 PM IC5: Approaches to Interdisciplinary Care in the PostAcute Setting

STYLE: Lecture **FOCUS:** Clinical Practice, Health Services Research **MES FACULTY:** Elissa Charbonneau, HealthSouth Corp; Bud Langham, Encompass Health - Home Health and Hospice Division; Tedra Cleveland, HealthSouth Corporation; Becky Bradley, HealthSouth Corporation

This course will highlight the approach to interdisciplinary care in the Post Acute Setting. Attendees will hear from Clinical Leaders from Encompass Health Corp. Our company provides inpatient rehabilitation and home health and hospice services. We will outline our approach from evaluation of patients in the acute care setting to determine the most appropriate post acute environment, through inpatient rehabilitation and home health services. We will define the role of the clinical navigator and Care Transition Coordinator and share strategies we use to collaborate and reduce the risk of readmission to the acute care hospital during the episode of care.

SAT 8:30 AM - 12:30 PM IC6: Kinesio Taping Hands-on Workshop

STYLE: Hands-on Workshop **FOCUS:** Complementary, Integrative, Rehabilitation Medicine, Clinical Practice **FACULTY:** Abhinav Yadav, Compleat Rehab and Sports Therapy; Sandeep Biswas, Teton Orthopedics

Course designed to introduce participants to the science, assessment and application techniques of the Kinesio Taping® Method. Lecture Tutorials of the history, science and theory of stimulus transmission through skin and resulting therapeutic benefit across efferent and afferent systems is reviewed. Corrections for Epidermis, Dermis, Fascia, Space, and Muscle in case study format are presented.

SAT 8:30 AM - 12:30 PM IC7: Restoring Voluntary Grasping Function After Stroke or SCI Using Functional Electrical Stimulation

STYLE: Hands-on Workshop **FOCUS:** Neuroplasticity, Spinal Cord Injury, Stroke **FACULTY:** Naaz Desai-Kapadia, Toronto Rehabilitation Institute-UHN; Debbie Hebert, Toronto Rehabilitation Institute-UHN; Dr.Milos Popovic, University of Toronto, Toronto Rehab Institute - University Health Network

One of the most promising approaches to improve motor function in individuals with neurological ailments is Functional Electrical Stimulation (FES). FES is a methodology that uses bursts of short electrical pulses to generate muscle contraction. If these electrical pulses are applied to motor nerves they can elicit action potentials that propagate along the axons towards the target muscle(s). The aim of this workshop is to illustrate the application of FES therapy for retraining upper extremity function, in particular grasping, in individuals with stroke and spinal cord injury.

continued...

Dive into details: ACRM.org/preconference

...continued

SATURDAY 29 SEPT

SAT 8:30 AM - 5:30 PM **IC8: Advanced Topics in Longitudinal Data Analysis**

STYLE: Lecture **FOCUS:** Measurement, Cross-Cutting **FACULTY:** Allan Kozlowski, Mary Free Bed Rehabilitation Hospital; Keith Lohse, University of Utah

Rehabilitation researchers and clinicians often deal with outcomes that evolve over time and are not suited to binary categorization of pre- post-assessments, as is common in other areas of medicine and healthcare. This course will build on our previously offered introduction to modeling longitudinal outcomes in a lecture and practical workshop format. Advanced topics include methods to assess data and model structure visually, statistically, and conceptually; and to fit more complex models and outcome types. While not a prerequisite, course participants will benefit from having a working knowledge of the introductory course content and of the R environment.

SAT 8:30 AM - 5:30 PM **IC9: Elevating Your Scientific Writing Prowess and Your Research Profile**

STYLE: Hands-on Workshop **FOCUS:** Cross-Cutting, Quality Improvement and Implementation Science **FACULTY:** Nicole Stout, 3eServicesLLC; Julie Silver, Harvard Medical School & Spaulding Rehabilitation Network; Leighton Chan, NIH Clinical Center Department of Rehabilitation Medicine

This IC will use an interactive lecture and workshop format to help you strengthen your scientific writing skills and elevate your research impact by focusing 3 principles: 1) Strong scientific writing skills enable you to succinctly portray findings, enhance the impact of your scientific work, and lead to high profile publications. 2) Receiving and providing strong peer review can make you both a better writer, a better mentor, and a better member of the research community. 3) Dissemination of your work should go beyond conference presentations and journal publications and can be portrayed as more than citations on your CV.

SAT 8:30 AM - 5:30 PM **IC10: Holistic Neuropsychological Rehabilitation: International Updates, Debates and Resources**

STYLE: Hands-on Workshop **FOCUS:** Brain Injury, International **FACULTY:** Andrew Bateman, Oliver Zangwill Centre for Neuropsychological Rehabilitation; Dawn Neumann, Indiana University; Ana Paula de Pereira, Universidade Federal do Parana; Jan Egil Nordvik, Regional kompetansetjeneste for rehabilitering HSØ ved Sunnaas sykehus

If you are a clinician working with people with Acquired Brain Injury this session will provide you with resources to help you assess, formulate and intervene efficiently and effectively. You will practice using a model to draw together assessment findings, patient self report and observations of family members to guide rehabilitation goal setting and interventions, consider how how templates provided can enhance communication with clients and their families, including cultural considerations; have a framework for holistic intervention that will include some detailed attention to cross cultural issues & a detailed focus on emotion recognition training.

SAT 8:30 AM - 5:30 PM **IC11: Integrative Cognitive Rehabilitation Psychotherapy for Brain Injury: An Overview**

STYLE: Case Study Presentation **FOCUS:** Brain Injury, Pediatric Rehabilitation, Neuroplasticity **FACULTY:** Mark Pedrotty, UNM

Clinicians will be introduced to an integrative cognitive rehabilitation psychotherapy model that includes assessment of three problem areas for treatment (cognitive, psychiatric, and substance abuse) and six levels of interventions (medication, cognitive retraining, internal compensatory strategies, external compensatory strategies, environmental adaptations and alternative interventions) for each of the three problem areas across all ages using a biocogpsychosocial model. Motivational interviewing will be discussed as a treatment intervention in assessing and addressing readiness to change. Four stages of treatment across the three problem areas will be described (surviving, healing, thriving, and ending) within setting up a treatment plan and monitoring progress.

SAT 8:30 AM - 5:30 PM **IC12: Integrating Outcome Measurement into Clinical Practice**

STYLE: Lecture **FOCUS:** Clinical Practice, Cross-Cutting **FACULTY:** Pamela Roberts, Cedars-Sinai; Deborah Backus, Crawford Research Institute; Sarah Morrison, Shepherd Center; Trudy Mallinson, George Washington University; Maria Cecilia Alpasan, Cedars-Sinai; Richard Riggs, Cedars-Sinai

Determining which rehabilitation outcome assessments to use is challenging. Some are good for making a diagnosis, others are better for capturing change. Knowing which factors are important for selecting the right outcome assessments is important for ensuring data are reliable, valid, fit within clinical workflow, and clinically useful. Outcome measurement is important for demonstrating value and to advance clinical knowledge. The purpose of this instructional course is to provide rehabilitation providers the rationale and guidelines for choosing outcome assessments to use routinely in a variety of clinical settings and develop a framework that facilitates implementation of an outcomes model.

SAT 8:30 AM - 5:30 PM **IC13: Latest Assessment and Treatment for Stroke, TBI and SCI to Accelerate Neurorehabilitation**

STYLE: Hands-on Workshop **FOCUS:** Clinical Practice, Neuroplasticity, Spinal Cord Injury **FACULTY:** Rebecca Martin, Kennedy Krieger Institute; Wise Young, W.M. Keck Center for Collaborative Neuroscience; Martin Runge, Geriatric Center Esslingen, private practice; Harald Schubert, Novotec Medical GMBH; Victoria Williams, Unique Body Solutions

This course will review the role of stem cell treatments, mechanography assessment and mechano-stimulation in the rehabilitation of patients with neurological dysfunction. Through participation clinicians will gain a greater understanding of the complimentary approach of stem cell treatments and high-intensity functional training for greater independence. Clinicians will develop new competencies in mechanotherapy to drive change in the damaged nervous system and achieve better outcomes in a shorter time making therapy more efficient. Case study demonstrations will focus on Stroke, TBI and SCI assessment, goal setting and treatment procedures for neuromuscular recovery, spasticity reduction, improved walking distance, flexibility, and balance.

SAT 8:30 AM - 5:30 PM **IC14: Navigating Strengths in Interdisciplinary Teams: A Look in the Mirror**

STYLE: Lecture **FOCUS:** Cross-Cutting, International **FACULTY:** Megan Mitchell, Overland Park, KS; Lise Worthen-Chaudhari, The Ohio State Univ.

This workshop based course will introduce interdisciplinary collaboration as a skill that can be learned and will provide structured opportunities to practice relevant skills and self-reflection. Participants will complete their own Gallup Strength Finder assessments, be introduced to the theory and research underlying strengths-based leadership and begin applying this knowledge and skill base during directed breakout sessions. Sessions will be facilitated by moderators and focus upon presenter and attendee ideas. Focus throughout the course will be directed towards recognizing individual strengths in order to maximize your role and impact and adapting your individual role throughout your career.

continued...

Believe it or not — all of these courses are included in the WORLD PASS

...continued

SATURDAY 29 SEPT

SAT 8:30 AM - 5:30 PM **IC15: Optimizing Outcomes in Wheelchair Skills & Maintenance Training Through Group & Remote Training**

STYLE: Hands-on Workshop **FOCUS:** Cross-Cutting, Clinical Practice, Spinal Cord Injury **FACULTY:** Lynn Worobey, University of Pittsburgh; Michael Boninger, University of Pittsburgh; R. Lee Kirby, Dalhousie University; Trevor Dyson-Hudson, Kessler Foundation; Rachel Cowan, University of Miami Miller School of Medicine; Mary Shea, Kessler Institute

Group training offers a mechanism to improve wheelchair skills and maintenance in the context of reduced lengths of stay across the rehabilitation continuum. We will present structured, evidence-based interventions in both of these domains and a train-the-trainer model that utilizes web-based training to improve clinician capacity to provide training. The workshop will include 1) rapid-fire presentations of research results from a multi-site randomized control trial 2) discussion of clinically-relevant outcome measures 3) hands-on practice with both training programs and 4) free teaching resources and outcome measures available to clinicians to enable delivery of training programs in one's own clinical setting.

SAT 8:30 AM - 5:30 PM **IC16: Using Smartphone Apps as a Brain Prosthetic for Patients With Cognitive Challenges & Fatigue**

STYLE: Demonstration **FOCUS:** Technology, Brain Injury, Military / Veterans Affairs **FACULTY:** Stacey Schwartz, Brain Education Strategies & Technology; Michelle Wild, Coastline Community College

Clients with traumatic brain injuries, strokes, multiple sclerosis, ADHD, chronic fatigue, Chemobrain, lupus and other conditions typically face challenges in memory, organization, executive functioning, energy, goal-setting/motivation and self-regulation. Training patients in how to use smartphone and tablet apps improves independence by addressing all these areas of cognitive challenge in a manner that is convenient and non-stigmatizing. See demonstrations of the seven apps that can be used to compensate for the majority of cognitive deficits experienced at work, home and school and learn how you can use them yourself in the rehabilitation process.

SAT 8:30 AM - 5:30 PM **IC33: Manual Wheelchair Skills Assessment and Training: A Practical Workshop for Therapists**

STYLE: Hands-on Workshop **FOCUS:** Cross-cutting, Clinical Practice, Spinal Cord Injury **FACULTY:** Ronald L. Kirby, Dalhousie University; Cher Smith, Nova Scotia Health Authority

Research evidence has been accumulating that demonstrates the safety and superior effectiveness of a formal approach to the assessment and training of the wheelchair skills of wheelchair users and their caregivers. The low-tech, high-impact Wheelchair Skills Program includes useful evaluation and training tools to help practitioners translate this research evidence into clinical practice. This 8-hour workshop, will begin with a 1-hour didactic introduction to the WSP. The practical portion of the workshop will provide participants with an opportunity to experience a range of wheelchair skills including spotting techniques and assessment methods, but will focus on training issues.

SAT 1:30 PM - 5:30 PM **IC17: How Alexander Technique Can Complement Rehabilitation Research and Practice**

STYLE: Lecture **FOCUS:** Complementary Integrative Rehabilitation Medicine, Cross-Cutting **FACULTY:** Molly Johnson, University of the Incarnate Word; Monika Gross, The Poise Project; Rajal Cohen, University of Idaho

Alexander technique (AT) is an educational approach to improving patterns of posture and movement during everyday activities. Alexander-based programs show clients how to choose functional patterns that are thought to result in more efficient use of postural muscles. This course will introduce AT training as a tool to enhance the ability of patients to be more active and skilled partners in their own care and recovery. Additionally, it will give an overview of research on the clinical impact of AT training on target populations and will discuss the principles and mechanisms that may be linked to positive clinical outcomes.

SAT 1:30 PM - 5:30 PM **IC18: How to Contribute to and/or Lead Clinical Research as a Physician or Rehabilitation Clinician**

STYLE: Mix of Lecture and Discussion **FOCUS:** Cross-Cutting, Clinical Practice **FACULTY:** Brad Kurowski, Cincinnati Children's Hospital and University of Cincinnati College of Medicine; Flora Hammond, Indiana University School of Medicine; Michael Jones, Shepherd Center; Douglas Katz, Boston University / Braintree Rehab

The purpose of this course is to assist physicians, rehab clinicians, and key research staff in improving their skills and understanding of the principles and practices used in the successful execution of patient-oriented research. Participants will gain insights to enhance their ability to get involved in clinical research and perform quality research according to existing regulations and guidelines.

SAT 1:30 PM - 5:30 PM **IC19: Matching Exercise Prescription to the Biomechanics of Walking in Rehabilitation to Optimise Mobility Outcomes**

STYLE: Lecture **FOCUS:** Clinical Practice, Limb Restoration Rehabilitation, Cross-Cutting **FACULTY:** Gavin Williams, Epworth Healthcare & University of Melbourne; Jennifer McGinley, The University of Melbourne

Optimizing gait in neurorehabilitation requires an understanding of the influence of acquired impairments on gait biomechanics. A framework to guide treatment selection is presented, illustrated by considering muscle strength. Muscle weakness is the main cause of mobility limitations in many neurological conditions. Strong evidence indicates that strength training improves muscle weakness, yet improvements have not translated into improved gait, with two recent reviews showing these interventions have not matched muscle function when walking. Better translation is likely to occur if interventions are better targeted, and a conceptual shift from strength training to targeted ballistic or power training occurs.



TOO MUCH TO PRINT!

<< All sessions & details
are in the online program
ACRM.org/onlineprogram



continued...



Dive into details: ACRM.org/preconference

SUNDAY 30 SEPT

MORNING ONLY COURSES

SUN 8:30 AM - 12:30 PM **IC20: Education is not Enough: A Guide to Implementing ACRM Cognitive Rehabilitation Manual at Organizational Level**

STYLE: Hands-on Workshop **FOCUS:** Clinical Practice, Brain Injury, Quality Improvement and Implementation Science **FACULTY:** Larissa Swan, Rehabilitation Hospital of Indiana; Christopher Carter, Spaulding Rehabilitation Network; April Groff, Learning Services- North Carolina Region; Frank Becker, Sunnaas Rehabilitation Hospital, University of Oslo; Anne-Margrethe Linnestad, Sunn

A recent survey of participants in the ACRM Cognitive Rehabilitation Manual training found that a little more than half of the materials were being used beyond the practices of the individual respondents. This workshop will review the results of this survey along with an overview of Knowledge Implementation theory. A step-by-step guide based on this model will be presented as a tool for knowledge implementation, which can be used by participants to assist in incorporating CR methods and other EBI into their organizations. Attendees will have an opportunity to participate in exercises to formulate an implementation plan for their organizations

SUN 8:30 AM - 12:30 PM **IC21: Evaluating Evidence in Everyday Clinical Practice**

STYLE: Hands-on Workshop **FOCUS:** Clinical Practice, Clinical Practice **FACULTY:** Ronald Seel, Virginia Commonwealth University

This course, co-sponsored by the Guideline Development, Dissemination, and Implementation Committee and the ACRM Evidence and Practice Committee, presents "how to" information that will help clinicians and researchers evaluate evidence from rehabilitation studies and translate evidence into everyday clinical practice. A primary aim is to de-mystify evidence-based practice concepts and equip participants with the knowledge and tools needed to translate evidence (e.g., a published article or clinical trial data) into action (e.g., choosing and implementing a specific intervention). This course will use brief didactic presentations and emphasize applying new knowledge in small work groups.

SUN 8:30 AM - 12:30 PM **IC22: Evaluation and Treatment for Chemotherapy-Induced Peripheral Neuropathy**

STYLE: Half Lecture, Half Hands-On Workshop **FOCUS:** Cancer Rehabilitation, Clinical Practice **FACULTY:** Cynthia Cooper, Cooper Hand Therapy; Sherry Hite, City of Hope National Medical Center

Many people who have been treated with chemotherapy experience neuropathy that interferes with their activities of daily living and negatively impacts their overall quality of life. As more aggressive pharmacological agents are developed and survival rates increase in the future, the number of people affected is projected to grow. This presentation will 1) define CIPN; 2) demonstrate evaluation techniques that focus on the unique characteristics of CIPN; and 3) present evidence-based interventions targeting the neuromuscular system. Suggestions for home programs including therapeutic exercise, manual therapy, and sensory stimulation will be provided.

SUN 8:30 AM - 12:30 PM **IC23: How to Find and Access Secondary Data for Your Research**

STYLE: Hands-on Workshop **FOCUS:** Cross-Cutting, Stroke, Geriatric Rehabilitation **FACULTY:** Kenneth Ottenbacher, University of Texas Medical Branch; Amy Pienta, Inter-university Consortium of Political and Social Research; Alison Stroud, Inter-university Consortium for Political and Social Research (ICPSR); Rachel Ward, Harvard School of Medicine

This workshop will highlight secondary data resources available for rehabilitation research. It will be led by researchers and archivists from the CLDR at the University of Texas Medical Branch and the ICPSR at the University of Michigan. Following a brief overview, two concurrent hands-on sessions will guide participants through the process of accessing and analyzing archived data from 1) the Boston RISE study, a community-based prospective cohort study on mobility and disability in older adults, or 2) the Stroke Recovery study, a clinical study examining relationships between neural output and biomechanical functions during ambulation in stroke and non-stroke participants.

SUN 8:30 AM - 12:30 PM **IC24: I Survived Critical Illness — Now What? Post-Intensive Care Syndrome Prevention, Identification, and Treatment**

STYLE: Lecture **FOCUS:** Clinical Practice, Cancer Rehabilitation **FACULTY:** Emily Bodensteiner Schmitt, Mayo Clinic; Kristin Hall, Mayo Clinic Rochester

More than 5.7 million patients are admitted to U.S. intensive care units annually. Those who survive their intensive care unit stay are the lucky ones, right? Lucky to be alive, yes, but often these people never return to their baseline level of mental health, cognition, and physical functioning. These new and lasting deficits following intensive care unit stay are collectively known as post-intensive care syndrome (PICS). This course will review the impacts of PICS on patients and families, discuss the relationship between delirium and PICS, and examine what therapists and health systems can do to minimize the impact of PICS.

SUN 8:30 AM - 12:30 PM **IC25: Interprofessional Care for Chronic Pain Population: Lessons From an Interdisciplinary Rehabilitation Program**

STYLE: Lecture/Work Groups **FOCUS:** Pain Rehabilitation, Clinical Practice, Pediatric Rehabilitation **FACULTY:** Heidi Kempert, Cleveland Clinic Children's Hospital for Rehabilitation; Lauren Nelson, Cleveland Clinic Children's Hospital for Rehabilitation; Erin Brannon, Cleveland Clinic Children's Hospital for Rehabilitation; Kristen Buchannan, Cleveland Clinic Chil

This pre-conference instructional course seeks to accomplish three primary objectives: 1) describe the importance of interprofessionalism in clinical care, 2) discuss best practices for integrating team members of varied disciplines to enhance team effectiveness and improve patient outcomes and 3) identify at least 2 strategies that can be used to optimize clinical outcomes through interprofessionalism in your specific setting. The structure of the workshop will include lecture driven education, small group activity, and question and answer section that will actively engage the audience to enhance translation of skills to each participants work environment and discipline.



...continued

SUNDAY 30 SEPT

MORNING ONLY COURSES

SUN 8:30 AM - 12:30 PM **IC26: Item Response Theory (IRT) and Its Applications to Rehabilitation****Outcomes Assessment**

STYLE: Lecture **FOCUS:** Measurement, Clinical Practice, Quality Improvement and Implementation Science **FACULTY:** Chih-Hung Chang, Rehabilitation Institute of Chicago; Andrew Bodine, Shirley Ryan AbilityLab

Item response theory (IRT) holds great promise and has become increasingly popular in clinical outcomes assessment because it provides more effective methods of assessment tool development, analysis and scoring. In this instructional course, we will provide an overview of IRT models and discuss their applications to clinical outcomes measurement and management in physical medicine and rehabilitation research and practice. Specifically, we will discuss the following topics using empirical data: 1) fundamentals of IRT; 2) types of IRT models; 3) applications of IRT models (e.g., item reduction, differential item functioning and equating); and 4) innovations in outcomes assessment.

SUN 8:30 AM - 12:30 PM **IC27: Multidisciplinary Treatment: An Innovative Approach to Facial Palsy**

STYLE: Lecture **FOCUS:** Complementary Integrative Rehabilitation Medicine, Clinical Practice, International **FACULTY:** Jodi Barth, Center for Facial Recovery; Victor Ibrahim, Regenerative Orthopedics and Sports Medicine; Michael Reilly, Georgetown University Medical Center; Gerd Fabian Volk, University of Jena; Chad Zatezalo, The Zatezalo Group

Facial palsy impacts over 1 million patients a year seeking medical guidance. Our multidisciplinary team is comprised of facial palsy experts in the fields of facial plastic surgery, ENT, regenerative medicine, oculoplastic surgery and physical therapy. This course is designed to provide attendees knowledge of current treatment regimens, interventions and new innovative techniques for the facial palsy patient.

SUN 8:30 AM - 12:30 PM **IC28: Novel BCI Approaches Boosting Neuroplasticity After Stroke and Providing Fast Objective****Assessment in DOC Patients**

STYLE: Hands-on Workshop **FOCUS:** Neuroplasticity, Cross-Cutting, Technology **FACULTY:** Brendan Allison, UC San Diego; Slav Dimov, g.tec medical engineering GmbH; Vivek Prabhakaran, University of Wisconsin-Madison

This instructional course will provide hands-on demonstrations and workshops with different systems that use the EEG and other multimodal signals to enable communication or provide rehabilitation for persons with severe motor disabilities. Attendees can don electrode caps and other head-mounted equipment and use systems and methods from different groups. We will help attendees proceed through the stages of mounting equipment, launching software, training the classifier, practicing communication, and other activities. This course may be interested persons who work with patients with severe motor disabilities, as well as people interested in neuroscience, engineering, medicine, movement therapy, psychology, signal processing, and HCI.

SUN 8:30 AM - 12:30 PM **IC29: Rhythm and the Motor System: New Opportunities for Gait Training**

STYLE: Lecture **FOCUS:** Arts & Neuroscience, Neuroplasticity, Cross-Cutting **FACULTY:** Brian Harris, Spaulding Rehabilitation; Lou Awad, Boston University; Abigail Spaulding, Spaulding Rehabilitation Hospital

Recent clinical research has demonstrated the profound impact of Rhythmic Auditory Stimulation (RAS) on the improvement of gait during neurologic rehabilitation. This presentation will cover the neural mechanisms responsible for rhythmic-motor entrainment, and discuss how innovative research led to the creation of RAS. The clinical research will also be presented along with case study video examples to demonstrate how RAS may be used with a variety of neurologic populations, including Stroke, TBI, PD, and MS. The attendees will learn the neuroscience foundation, how to apply these principles in their own practice, and areas for future research.

SUN 8:30 AM - 12:30 PM **IC30: Stimulation Paradigms and Parameters After Spinal Cord Injury**

STYLE: Hands-on Workshop **FOCUS:** Spinal Cord Injury, Clinical Practice, Complementary Integrative Rehabilitation Medicine **FACULTY:** Ashraf Gorgey, Hunter Holmes McGuire VA Medical Center; T. Ann McElroy, Restorative Therapies Inc.

We are planning to provide hands-on training on a few of the commercially available stimulators to enable clinicians, researchers and consumers to safely handle electrical stimulation units to maximize muscle health after SCI. This workshop will serve as the basis for many disciplines who are willing to start an effective rehabilitation program using the technology of electrical stimulation, including physical therapists, occupational therapists, physicians, and exercise physiologists. The target audience will also include researchers and consumers who are likely to expand and benefit from applications of electrical stimulation.

SUN 8:30 AM - 12:30 PM **IC31: The NIH Toolbox: State of the Art Outcome Measures for Rehabilitation Practice and Research**

STYLE: Lecture **FOCUS:** Cross-Cutting, Measurement **FACULTY:** Richard Gerhson, Northwestern University; Allen Heinemann, Northwestern University; Cindy Nowinski, Northwestern University; Julie Hook, Northwestern University

This Introductory workshop presents instructional information and hands-on demonstration of the cutting edge measurement system to assess neurological and behavioral function — the NIH Toolbox®. The advantages of employing common measures across rehabilitation research and clinical practice will be addressed. Recent findings with the NIH Toolbox in spinal cord injury, stroke and traumatic brain injury will be described. Participants will acquire the basics of computer adaptive testing and modern psychometric approaches and the building blocks for administration of the NIH Toolbox® measures for emotional, cognitive, sensory and motor function via an iPad.

SUN 8:30 AM - 12:30 PM **IC32: User Centered Design of Technologies for Rehabilitation: A Discussion and Demonstration**

STYLE: Presentations, Round-robin Demonstrations, Panel Discussion **FOCUS:** Technology, Cross-Cutting **FACULTY:** Rachel Proffitt, University of Missouri; Tracey Wallace, Shepherd Center; Lynne Gauthier, The Ohio State University; Michelle Woodbury, Medical University of South Carolina; Lauren Sheehan, Neofect USA; John Morris, Shepherd Center; Mary Cooley, Dynofit

Technology is being increasingly incorporated into rehabilitation at all phases. Unfortunately, many companies and researchers have developed technologies that do not meet the needs of the rehabilitation consumer or clinic. The purpose of this instructional course is to present the work of researchers in field, highlighting the User Centered Design Processes these researchers have used in the development of their technologies. Researchers will present and demo the technology they have developed.



COGNITIVE REHABILITATION TRAINING

FRI 28 - SAT 29 SEPT 8:00 AM - 5:30 PM



BRAIN INJURY INTERDISCIPLINARY SPECIAL INTEREST GROUP



with Authors
of the Manual



2,000+ have already attended this popular training course

12.5 hours of continuing education in your choice of 10 disciplines



of attendees would likely recommend this training to colleagues

Make sure you and your team have ALL of the up-to-date cognitive rehabilitation strategies. The ACRM Manual and the LIVE training teach evidence-based interventions for impairments of: executive functions, memory, attention, hemispatial neglect, social communication — encompassing ALL of the evidence-based cognitive rehabilitation interventions.

WHO SHOULD ATTEND? Speech-language professionals, psychologists, occupational and physical therapists, physicians and other professionals serving people with brain injuries. Family members and caregivers may also benefit.

COURSE INCLUDES:

- 1) **THE MANUAL:** Printed copy of the ACRM *Cognitive Rehabilitation Manual* (\$150 value) including worksheets. Also available for purchase separately
- 2) **ONLINE COURSE:** Access to previously recorded Cognitive Rehabilitation Training (\$395 value) audio with slides. Also available for purchase separately
- 3) **CME/CEUs:** 12.5 hours of continuing education in your choice of 10 disciplines

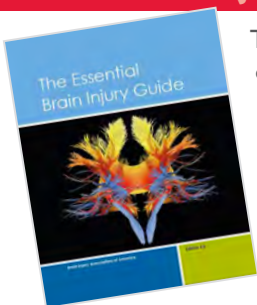
MORE: ACRM.org/cogdal



LIMITED TIME SPECIAL EITHER COURSE:
Early Bird Rates ONLY \$399 student member, \$499 member

CERTIFIED BRAIN INJURY TRAINING: THE OFFICIAL ACADEMY OF CERTIFIED BRAIN INJURY SPECIALISTS (ACBIS) COURSE

FRI 28 - SAT 29 SEPT 8:00 AM - 5:30 PM



The ACBIS training and certification exam are intended for paraprofessionals and professionals at all levels who want a strong foundation in the best practices in brain injury rehabilitation. This official ACBIS instructional course is designed to prepare participants to take the certification examination. Applicants may also elect to prepare for the exam through self-study.

Join more than 6,000 Certified Brain Injury Specialists worldwide and enjoy the support of the Academy offering brain injury education CEUs.

For CBIS requirements, more information & to register: ACRM.org/acbis



DISTINGUISHED FACULTY



DREW NAGELE, PSYD, CBIST, CESP
Beechwood NeuroRehab



STEPHANIE KOLAKOWSKY-HAYNER, PHD, CBIST, FACRM
Icahn School of Medicine at Mount Sinai



HEIDI REYST, PHD, CBIST
Sage Solutions Group



DAVE ANDERS, MS, CCC-SLP, CBIST
On With Life, Inc.



ANGIE JACKSON
Pate Rehabilitation

THANK YOU Exhibitors & Sponsors

AS OF 3/30/18



FOR INFORMATION ON EXHIBITING AND SPONSORING, please contact: Jenny Richard at JRichard@ACRM.org or phone +1.703.574.5845 or complete this inquiry form: www.bit.ly/SponsorInquiry

ACRM 
Annual Conference

INTERDISCIPLINARY

Critical content, serious science, bigtime community

PROGRESS IN
REHABILITATION
RESEARCH

TRANSLATION TO
CLINICAL PRACTICE



NONSTOP CONTENT

Brain Injury / Spinal Cord Injury / Stroke / Neuroplasticity / Cancer Rehabilitation / Neurodegenerative Diseases / Pain / Health/Disability Policy / International / Measurement / Lifestyle Medicine / Military/Veterans Affairs / Pediatric Rehabilitation / Geriatric Rehabilitation / Technology / Limb Loss Rehabilitation / Arts & Neuroscience / Complementary Integrative Rehabilitation Medicine / Clinical Practice / Cross-Cutting



CALL for PROPOSALS

Have you submitted yet?

SUBMIT. DEADLINES HERE...

ACRM.org/call

www.ACRM.org

TEL: +1.703.435.5335





If you are not interested in the very latest rehabilitation research and interdisciplinary collaboration coming to Atlanta, kindly pass along this brochure to a colleague who is. **THANK YOU!**

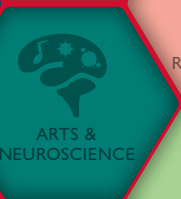
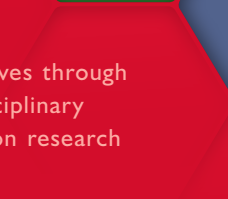
NON PROFIT
U.S. POSTAGE
PAID
CAPITOL HEIGHTS, MD
PERMIT NO. 4168

REGISTER!

EARLY BIRD RATES IN EFFECT

www.ACRM.org/register

OR CALL: +1.703.435.5335



ACRM 
95th Annual Conference

PROGRESS IN REHABILITATION RESEARCH

TRANSLATION TO CLINICAL PRACTICE



Improving lives through interdisciplinary rehabilitation research

registered yet?

I N T E R D I S C I P L I N A R Y